

# Factsheet & Concept

## *Gardenia Beach*

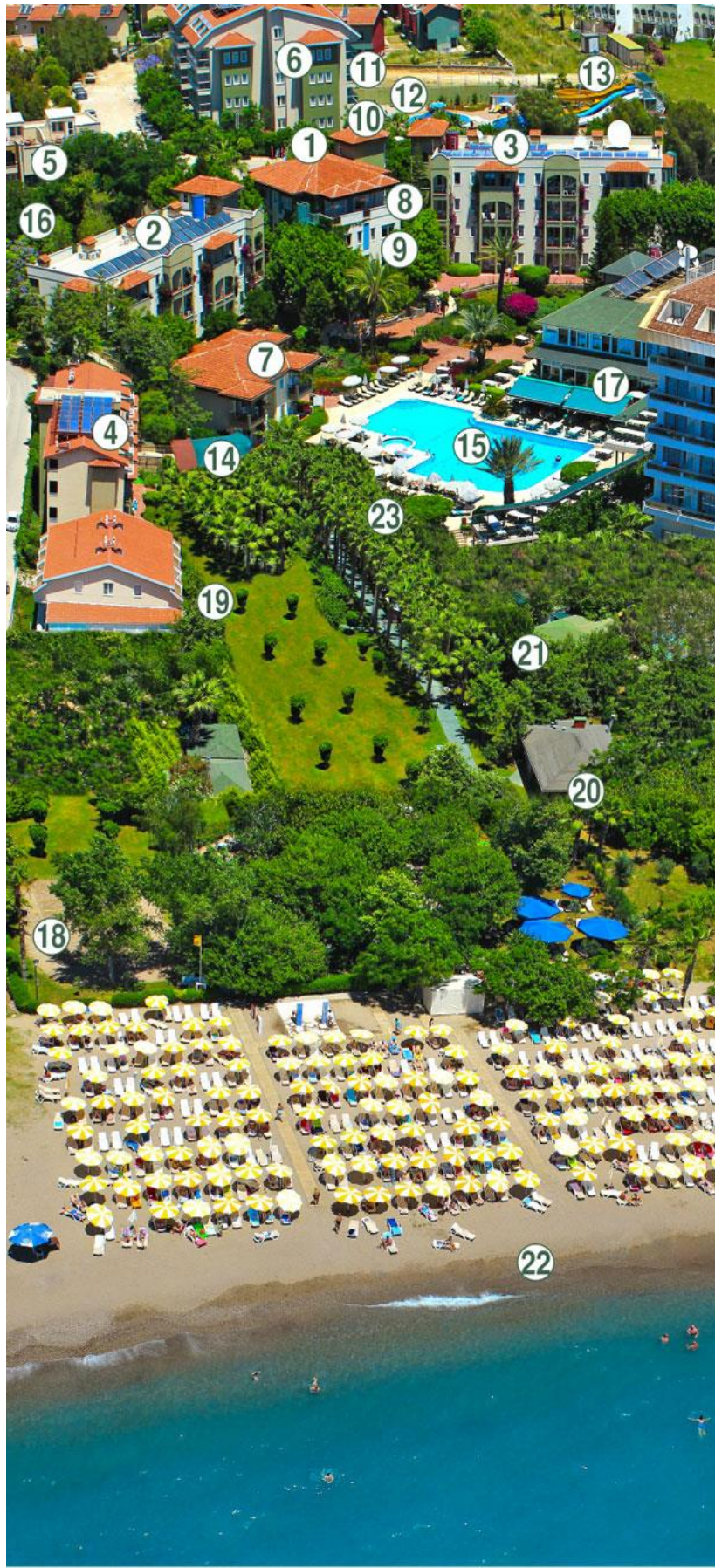
### *Hotel* ★★★★★



**Alanya**

<b>Catagory</b>	4 Stars
<b>Total Rooms</b>	273
<b>Beds</b>	819
<b>Adress</b>	Karaburun mah.ilifos cad no:22 Alanya
<b>Phone</b>	00 90 242 5274102
<b>GSM MOBILE / WHATSAPP</b>	00 90 242 5270550
<b>Web</b>	<a href="http://www.gardeniahotels.com">http://www.gardeniahotels.com</a>
<b>E-Mail</b>	<a href="mailto:Beach@gardeniahotels.com">Beach@gardeniahotels.com</a>
<b>G.Manager</b>	Hüseyin yüksek
<b>Asst.Manager &amp; Sales Manager</b>	Adnan Kurt
<b>Opening period</b>	April – October
<b>Opened in</b>	1996
<b>Renovated</b>	2015
<b>To the airport Antalya</b>	95 Km
<b>To the airport Gazipasa</b>	80 Km
<b>To the beach</b>	On the Beach
<b>Location</b>	In justiniano bay on Karaburun
<b>Credit Cards</b>	Visa, Master
<b>Pets</b>	Pets are not allowed
<b>Concept</b>	All inclusive (see concept)
<b>Transfer time from Antalya Airport</b>	90 to 110 minutes
<b>Transfer time from Gazipasa Airport</b>	60 to 70 minutes
<b>Nearest city</b>	33 km Alanya, Side 32 km, Manavgat 25 Km Antalya 100 km
<b>Taxi</b>	500 m
<b>Bus Stop</b>	500 m
<b>Texture of the sea-beach</b>	Sand-gravel steeply sloping
<b>Beach</b>	Justiniano beach, Public, Broad beach (sand gravel), Steeply slipping, showers and changing rooms available
<b>Household service</b>	service Available on a daily basis
<b>Check-out &amp; Check-in</b>	Check-out is before midday. Check-in is 1 pm
<b>Shopping possibilitys</b>	Car Rental, Market,
<b>Handicap Wc</b>	2 available 1 in the restaurant, 1 at Aquapool
<b>Longitude:</b>	36.652456
<b>Latitude:</b>	31.669152





- ① Reception
- ② Rooms 1101-1307
- ③ Rooms 2101-2407
- ④ Rooms 3101-3510
- ⑤ Rooms 4001-4512
- ⑥ Rooms 5101-5616
- ⑦ Rooms 3111-3118
- ⑧ Meeting Room
- ⑨ TV Room
- ⑩ Hamam / Sauna / Fitness
- ⑪ A la Carte Restaurant
- ⑫ Snack Bar
- ⑬ Aquapark / Pools
- ⑭ Anfiteather
- ⑮ Main Pool
- ⑯ Relax Pool
- ⑰ Main Restaurant
- ⑱ Beach Volley
- ⑲ Shop and Rooms 3111-3118
- ⑳ Beach Snack / Bar
- ㉑ Mini Club
- ㉒ beach
- ㉓ Cats House



## Schwimming Pools

Swimming Pools	m <sup>2</sup>	Depth Min.- Max.	Where	Slides	Photo
Main Pool	220 m <sup>2</sup>	Min 85 cm Max 185 cm	Next to main restaurant.	No	
Camelia Relax Pool	68 m <sup>2</sup>	Min 1,15 cm Max 1,65cm	D Block	No	
Aqua activity Pool	312 m <sup>2</sup>	Min 1,10 cm Max 1,47cm	E block	Yes 3 pieces	
Aqua Relax Pool	40 m <sup>2</sup>	Min 1,25cm Max 1,55cm	E block	No	
Aqua Children Pool	100 m <sup>2</sup>	Min 35 cm Max 35 cm	E block	Yes 1 set	

## Rooms

All rooms are equipped with a hairdryer, a direct dial telephone, a telephone in the bathroom, satellite TV, WC/shower or a bath, a 24-hour self-service air conditioning system (heating and cooling).

**Number of rooms: 273**

**Total number of beds: 819**

<b>Blocks</b>	Aronia A Block	Begonia B Block	Camelia C Block	Dahlia D Block	Euphorbia E Block	Magnolia Block	VILLA
<b>Total number of rooms</b>	28	21	50	67	93	8	6
<b>Big Double room</b>	26	21	45	0	83	8	6
<b>Big Double room Economy</b>	5	4	0	0	13	4	0
<b>Superior Room</b>	26	21	45	0	83	8	6
<b>Family 2 bedrooms</b>	1	0	5	0	10	0	0
<b>Standard Double Room</b>	0	0	0	67	0	0	0
<b>Standard Double Room Economy</b>	0	0	0	22	0	0	0
<b>Partial sea view</b>	14	7	10	30	10	4	0
<b>Pool view</b>	28	7	10	40	60	0	6
<b>Garden view</b>	28	21	50	67	93	8	6
<b>Handicap Room</b>	2	0	1	0	0	0	0
<b>Non-smoking rooms</b>	28	21	50	67	93	8	6

## Room Types

### Big Double room

There are 206 Big Double room rooms with balcony, Shower, 1 double bed, 1 single bed and 1 folding couch. (24 hours) Direct dial telephone in room and bathroom, satellite TV with LCD TV, minibar, Rent safe, all rooms are tiled floor. Each room has a living area of approx. 29.00 m<sup>2</sup> (room 20m<sup>2</sup>, bathroom 4 m<sup>2</sup>, balcony 5m<sup>2</sup>). Entrance door width is 80 cm, bathroom door width is 70 cm. Assignment for 2 + 0, 2 + 1, 2 + 2, 3 + 0, 3 + 1 possible.

### Big Double room Economy

Identical as Big Double room Rooms with limited view from balcony.

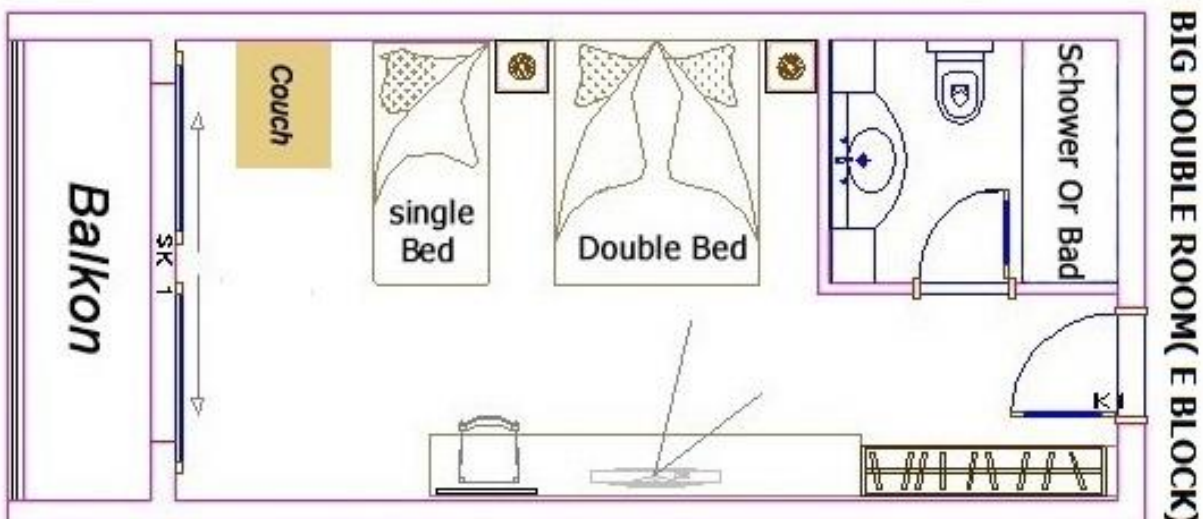
### Superior Room

Identical as Big Double room Rooms

**Room Photo (E block)**



**Room Plan (E block)**



## Family 2 Bedrooms

There are 20 standard family rooms (2 bedrooms) with balcony, shower, equipped. Hair dryer, self-adjustable air conditioning (24 hours), direct dial telephone in room and bathroom, satellite TV with LCD TV, minibar, safe for rent. All rooms are tile floor. Each room has a living space of approx. 36.00 m<sup>2</sup> (room 27m<sup>2</sup>, bathroom 4 m<sup>2</sup>, balcony 5m<sup>2</sup>). Entrance door width is 80 cm, bathroom door width is 70 cm.

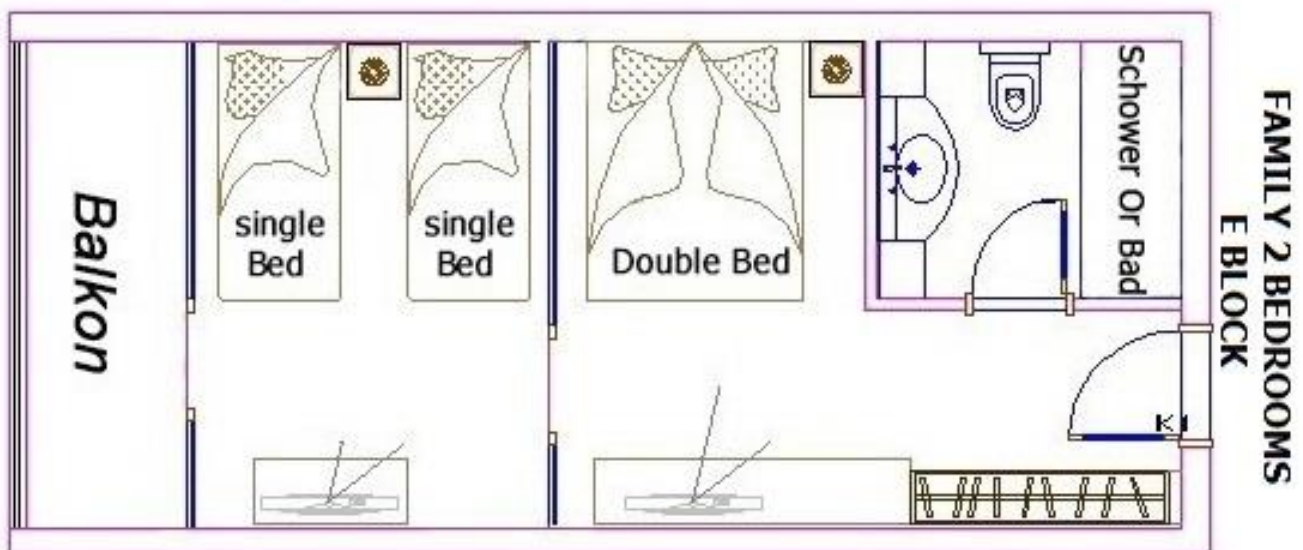
Assignment for 2+0, 2+1, 2+2,3+0,3+1,4+0 possible.

There is 1 double bed in the 1st room and 2 single beds in the 2nd room

### Room Photo (E block)



### Family 2 Bedrooms Plan ( E block)





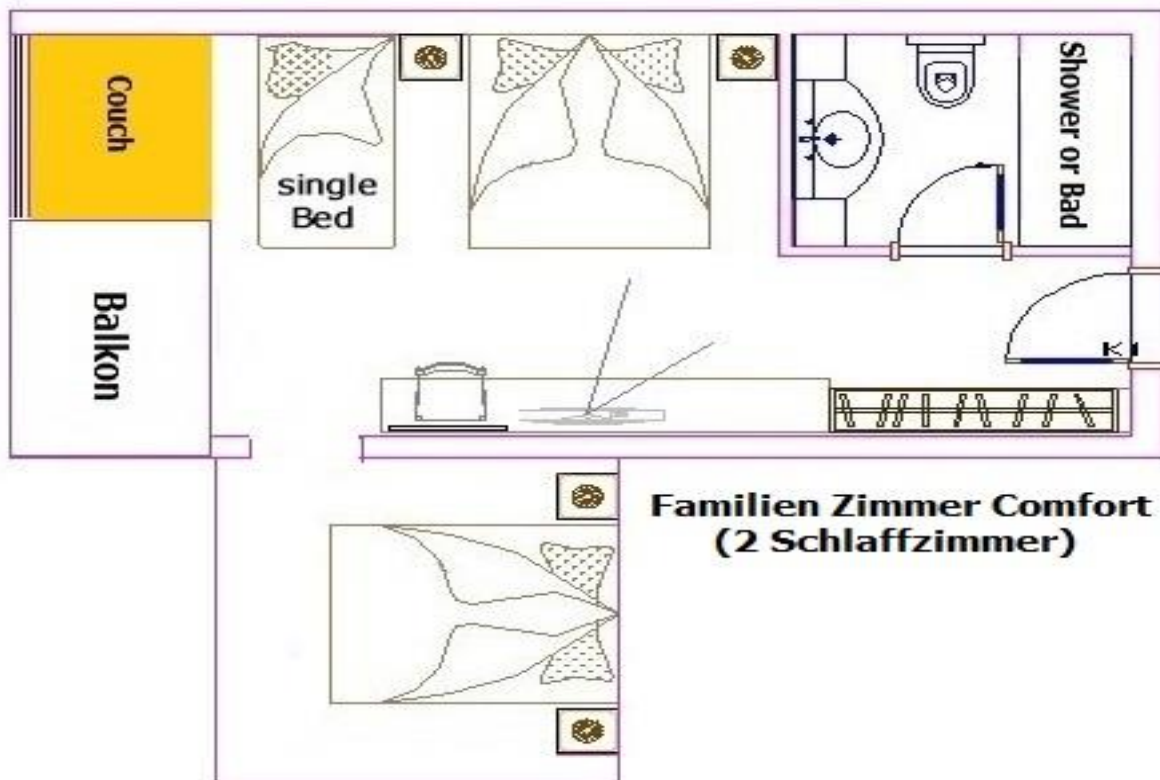
## Family Room Comfort (2 bedrooms)

There are 6 family rooms, 2 bedrooms with balcony, shower, hair dryer, self-adjustable air conditioning (24 hours), direct dial telephone in room and bathroom, satellite TV with LCD TV, minibar, safe for rent . All rooms are tile floor. Each room has a living space of approx. 40.00 m<sup>2</sup> (room 27m<sup>2</sup>, bathroom 4 m<sup>2</sup>, balcony 5m<sup>2</sup>). Entrance door width is 80 cm; bathroom door width is 70 cm. Assignment for 2+0, 2+1, 2+2.3+0.3+1.4+0.4+1 possible. There is 1 double bed, 1 single bed and 1 couch in the 1st room and 1 double bed in the 2nd room

### Room Photo (C block)



### Family Room Comfort (2 bedrooms) Plan ( C block)





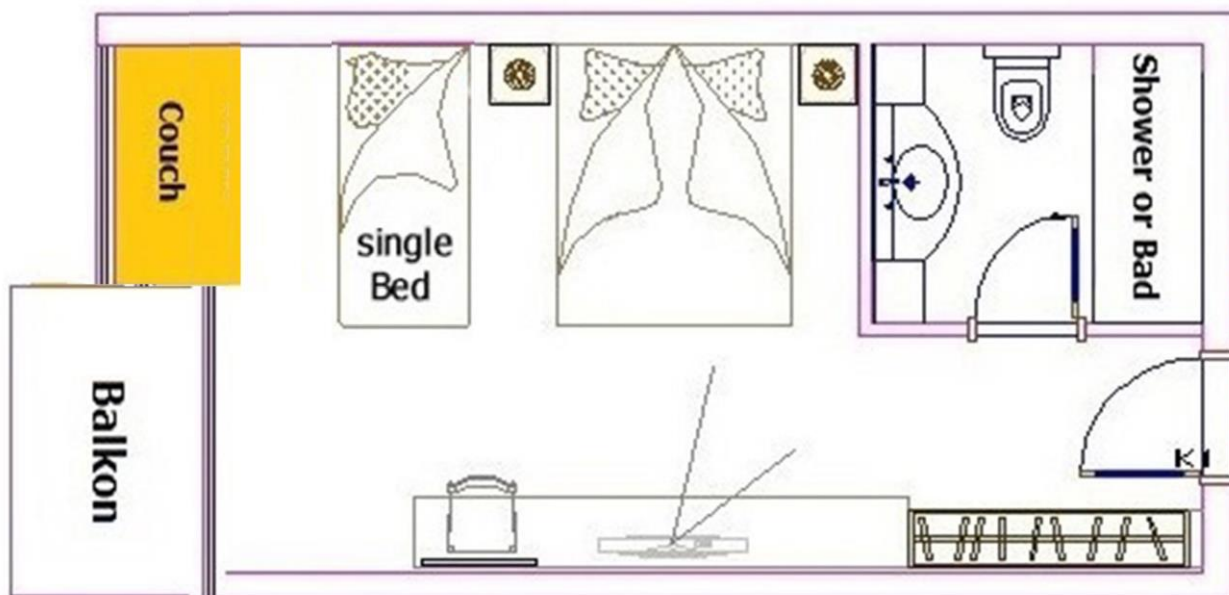
## Standard Double room

There are 45 standard double rooms with balcony or terrace, shower, 1 double bed and 1 single bed. Hair dryer, self-adjustable air conditioning (24 hours), direct dial telephone in room and bathroom, satellite TV with LCD TV, minibar, safe for Rent . All rooms are tile floor. Each room has a living space of approx. 25.50 m<sup>2</sup> (room 18.50 m<sup>2</sup>, bathroom 3.5 m<sup>2</sup>, balcony 3.50 m<sup>2</sup>). Entrance door width is 80 cm, bathroom door width is 70 cm. Occupancy for 2+0, 2+1 possible.

**Room photo (D block)**



**Room plan (double bed & 1 single beds) (D block)**



**STANDARD ROOM WITH 1 DOUBLE BED & 1 SINGLE BED**

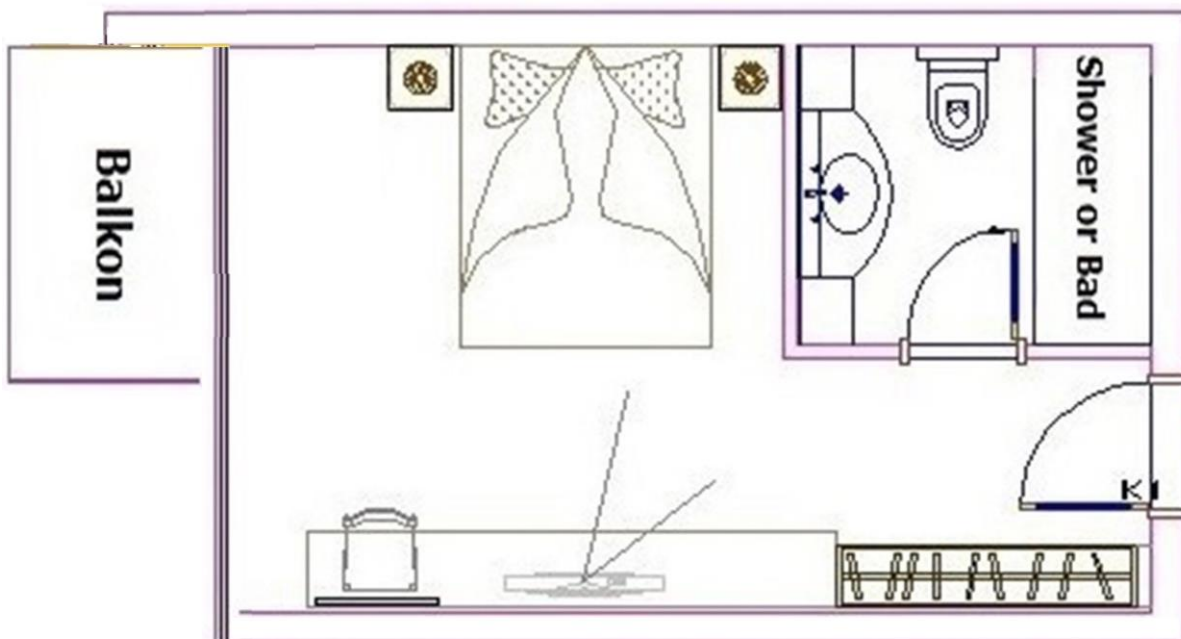
## Standard Economy Room

There are 22 standard economy rooms only with limited view and a bit smaller. Rooms are equipped with balcony or terrace, shower, 1 double bed. Hair dryer, self-adjustable air conditioning (24 hours), direct dial telephone in room and bathroom, satellite TV with LCD TV, minibar, safe for rent . All rooms are tile floor. Each room has a living space of approx. 20.00 m<sup>2</sup> (room 15.00 m<sup>2</sup>, bathroom 3.5 m<sup>2</sup>, balcony 1.50 m<sup>2</sup>). Entrance door width is 80 cm, bathroom door width is 70 cm. Occupancy for 2+0 possible.

**Room photo (D block)**



**Room plan (1 double bed ) (D block)**



**ECONOMY ROOM WITH 1 DOUBLE BED**

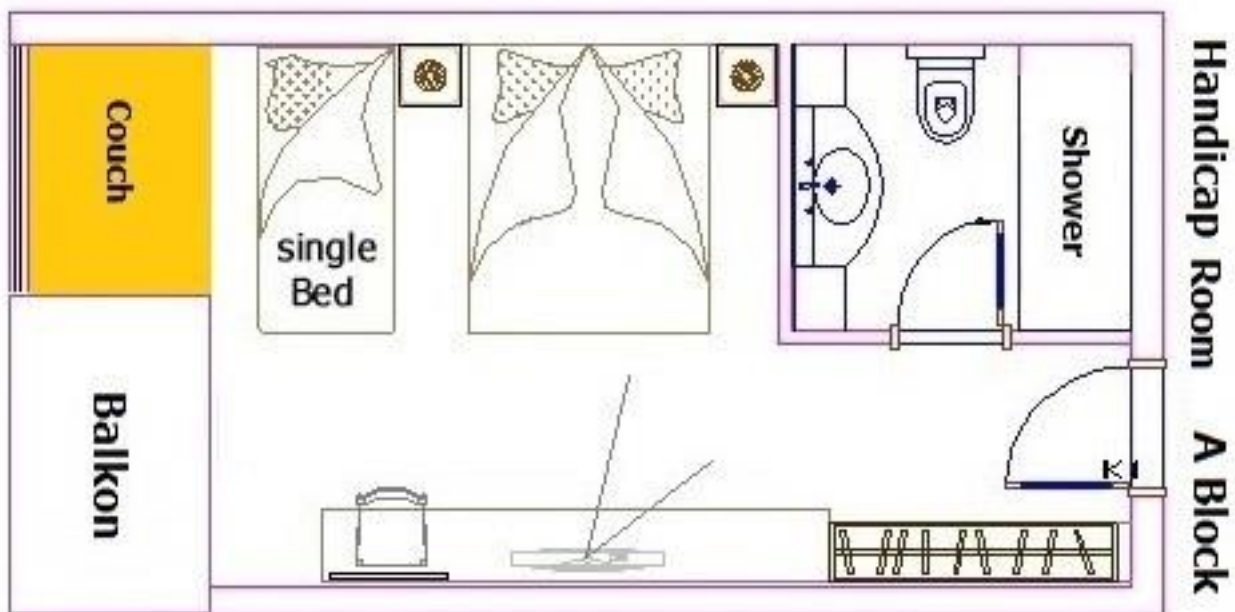
### Handicap rooms

3 rooms are specially designed for disabled guests. They offer an extended door, low sanitary facilities, a shower and a balcony. Washbasin is wheelchair accessible. To the balcony there is a threshold at the balcony door. **Please pay attention to the fact that there are several stairs and ramps in our facility and is not suitable for wheelchair users without escort.**

**Room Photo (A block)**



**Room plan (A block)**





### Handicap Room Shower /Wc Photo (A block)



### **Baby bed**

Babybetten (cot) is available free of charge on request. Masks are 90 \* 60 cm wide and 60 cm high

### **Example picture;**



### Elevator features

#### Reception Elevator

Size	131 cm* 9cm
Entrance door	90 cm

#### C block Elevator

Size	106 cm* 109cm
Entrance door	80 cm

#### D block Elevator

Size	104 cm* 90 Cm
Entrance door	80 cm

#### E Block Elevator

Size	161 cm* 99cm
Entrance door	80 cm

### Restaurants & Bars

Name	Kitchen or drink	Services	Inside Capacity	Outside Capacity
<b>Restaurants</b>				
Main restaurant	Buffet international	Breakfast Lunch Dinner	200	600
<b>A la carte Restaurants</b>				
A la carte	International	A la carte	40	
<b>Bars / Snacks</b>				
Pool Bar	Snacks and Drinks		100	100
Aqua pool Bar /Snacks	Snacks and Drinks			50
Beach Bar / Snacks	Snacks and Drinks			250

### Gardenia conference room

Names of the hall	Width (m)	Length(m)	Size (m²)	Places max.	
Conference Hall	9,5	14	133	120	



## Description of the catalog

### **Gardenia Beach Hotel**

#### **Location:**

Located directly on the wide Gravel-sand beach of Karaburun. The city of Alanya is located about 35 km in the east direction, Manavgat about 30 km in the west direction. Taxis and public minibus connections available in both directions.

#### **Facilities:**

7 buildings with 273 rooms. Reception, Elevator, restaurant with terrace, Bars, Conference room. Garden with swimming pool, quiet pool and pool with water slides (hourly). Doctor (hourly).

#### **Equipment:**

This cozy holiday hotel consists of several three- to five-storey buildings and comprises a total of 273 rooms. In the main building, guests will find a lobby with a reception and a seating area as well as a lounge with a TV corner. Wi-Fi is included. Furthermore, the hotel offers a buffet restaurant with outdoor terrace. In the well-tended, spacious garden area there are three freshwater swimming pools with separate children's pool, 2 pool bars, water slide (by the hour), sun terrace, the entertainment stage for the evening show. On the beach there is a beach bar with a partially covered seating terrace. Here as well as at the swimming pools, sun loungers, cushions and umbrellas are included for our guests.

#### **Accommodation**

##### **Standard Double Room: (25,50 m<sup>2</sup> with bathroom and balcony)**

The welcoming rooms are equipped with 1 double bed or 2 single beds, Shower / WC, hairdryer, air conditioning, minibar, hire safe, telephone, satellite TV with music channel and balcony. Double room for single use possible.

##### **Standard Double Economy Room: (22 m<sup>2</sup> with bath and balcony)**

Rooms are equipped with 1 double bed or 2 single beds, Shower / WC, hairdryer, air conditioning, minibar, hire safe, telephone, satellite TV with music channel and balcony. Are identical to the double and are located in a slightly less desirable location and smaller than standard double rooms.

##### **Big Double room Room: (29m<sup>2</sup> with bathroom and balcony)**

Are more spacious and offer 1 double bed, 1 single bed and a folding sofa for the 4th person. Shower / WC, hairdryer, air conditioning, minibar, hire safe, telephone, satellite TV with music channel and balcony.

##### **Big Double room Room Economy: (29m<sup>2</sup> with bathroom and balcony)**

Are identical to the Big Double room and are located in a slightly less desired location.

Superior room: (29m<sup>2</sup> with bathroom and balcony)

Is identical to the Big Double room.

##### **Superior Room**

Are identical to the Big Double room , Only bookable for Max 2 Adults + 1 Child (12 years)

##### **Family Standard (2 Bedrooms) : (36m<sup>2</sup> with bath and balcony)**

Offer from two separate bedrooms with connecting door, 1 double bed, 2 single beds.

Shower / WC, hairdryer, air conditioning, minibar, hire safe, telephone, satellite TV with music channel and balcony.

##### **Family Room Comfort (2 Bedrooms)**

There are 6 family rooms, 2 bedrooms with balcony, shower, hair dryer, self-adjustable air conditioning (24 hours), direct dial telephone in room and bathroom, satellite TV with LCD TV, minibar, safe for rent . All rooms are tile floor. Each room has a living space of approx. 40.00 m<sup>2</sup> (room 27m<sup>2</sup>, bathroom 4 m<sup>2</sup>, balcony 5m<sup>2</sup>). Entrance door width is 80 cm; bathroom door width is 70 cm. Assignment for 2+0, 2+1, 2+2.3+0.3+1.4+0.4+1 possible.





There is 1 double bed, 1 single bed and 1 couch in the 1st room and 1 double bed in the 2nd room

**Entertainment:** free of charge: WLAN in the lobby / restaurant area, internet corner, darts, bowls, TV room, soft animation, evening shows. Extra charge: billiard, mini golf.

**Wellness:** Turkish bath is included. Massages and other treatments are available in the spa area for a fee.

**Beach and bathing:** steeply falling gravel / sand beach. Sunshades and sunbeds with cushions are free of charge at the beach and pool, towels are provided on deposit. Credit cards: VISA, MasterCard.

**Sport Included:**

(Upon availability): fitness room, table tennis, beach volleyball and darts.

**Sport for a fee:**

(According to availability): Billiards and various water sports independently from the hotel by foreigner at the beach.

**All Inclusive:**

Breakfast, lunch and dinner buffet, snacks at the beach bar, afternoon snacks, coffee / tea and pastries as well as midnight soup. Various local alcoholic and non-alcoholic drinks from 10 o'clock to 24 o'clock at various bars inclusive. On arrival, your mini-fridge is equipped with one bottle of water per person. Wearing an all-inclusive bracelet is obligatory.

Not included in the All Inclusive:

Drinks after 24 hours, import alcoholic drinks, freshly pressed fruit juices, telephone and fax charges as well as laundry and medical services.

**Children's program:**

Mini-club (4-12 years), children's animation, mini-disco, children's pool, water slide (by the hour), playground, baby carriages, kids club opening times 10:00 a.m. to 12:30 p.m. and 2:30 p.m. to 5:00 p.m.

**Note:**

Baby cots are available on request free of charge.

Official category: 4 stars.

**The hotel is not suitable for wheelchair users.**