



FACTS
AND
INFORMATION

SUMMER 2023





Contents

General Information	03
Services & Facilities	04 - 05
Kids Concierge	06
Room Essentials	07
Rooms	08 - 18
Villas	19 - 27
Room Comparison	28 - 29
Exclusive Hospitality Services	30
Food & Beverage	31 - 36
Entertainment, Recreation & Leisure	37
Kids & Teens	38
Spa & Wellness	39
Fitness	40
Pools & Beach	41 - 42
Golf	43 - 44
M.I.C.E. & Weddings	45 - 46
Football	47
Loyalty	48
Local Attractions	49
Privilege Services	50
Health, Safety & Environment	51
About Regnum Carya	52 - 53

Regnum Carya Hotel reserves the right to make changes, corrections, and/or improvements to the Information, and/or to the products, programs, and/or services described in such information, at any time without prior notice.

Restrictions or changes may be applied in the operation or use of some of our services and premises as per the decisions made or updated by official institutions and authorities due to the pandemic.

WELCOME TO REGNUM CARYA

A true gift to the world of tourism from Belek, Antalya, Turkey.
The luxury 5-star all-inclusive resort presents an extraordinary new holiday platform through its tailor-made services and exquisite surroundings.

Location

The hotel is approximately a 30-minutes drive from Antalya International Airport and 7 minutes flight with the hotel's private helicopter, 45 minutes away from downtown Antalya, 3 minutes from Carya Golf Club, 5 minutes from The Land of Legends Theme Park and 7 minutes from National Golf Club.

Airport Transportation Types

VIP Transfer, Bus, Taxi or Helicopter

Check-in Policy

Check-in time is 3:00 p.m. hotel time. If you arrive earlier, we will be pleased to accommodate you in Regnum Lounge equipped with showers and lockers until your room is ready. Certain room type requests may not be available prior to 3:00 p.m. hotel time. (Not guaranteed due to high volume of occupancy)

Check-out Policy

Check-out is at 12:00 noon time. If you require late check-out, please contact us before 10:00 a.m. on the day of your departure, we will do our best to accommodate your request. Extra charges may apply depending on the extended check-out time and availability. Check-outs after 6:00 p.m. will be charged as one night's room fee.

Early Check-in Late Check-out Policy (subject to availability)

Early arrival before 8:00 a.m. or late departure after 6:00 p.m. will be charged at 100% of the daily room rate.

Spoken Languages

Turkish, English, Russian, German

Accepted Credit Cards

Visa, Master Card, Eurocard, American Express

Currency

Turkish Lira (TRY/₺) is the currency of Turkey. Euro (EUR/€), US Dollar (USD/\$) Pound Sterling (GBP/£) are accepted as cash.

Climate

Antalya / Belek has a typical Mediterranean climate with wet humid winters and hot dry summers. Winters are mild and rainy, while summers are hot and dry. The winters are like spring, and the spring resembles summer.

Voltage

The hotel operates on 220-240 volts / 50 hertz

Wireless Internet Access

Complimentary wireless internet service is offered to all guests in their rooms and within the hotel area.

Visitor Policy

Hotel guests may invite their visitor to the lobby for 30 minutes between 10:00 a.m. and 6:00 p.m. Visitors must present their passport or ID card upon arrival. Visitors are not allowed to guests rooms. Hotel guests are responsible for their visitor at all times. Visits exceeding 30 minutes will be charged as hotel daily usage.

Pet policy

Pets are not accepted in the rooms or in the common areas of the hotel.

Smoking policy

Smoking is prohibited in all the rooms and all public areas of the hotel. Smoking is only allowed outdoor, balcony or terrace.

Responsible Drinking Policy

Alcohol will only be served to guests who are over the age of 18. If a guest seems younger than 18, a photo identification will be requested. Any guest who appears to be drunk will not be served any alcohol or admitted to any public areas of the hotel.

Age Requirement Policy

Guests must be 18 years or older and must have valid identification to reserve and check into a room alone.

Non-Hotel Services

Except for Regnum Hotel business partners, products or services purchased or rented out of facility are not allowed to be served in the facility.

Passport & Visa

As visa and passport requirements are determined by nationality, visitors should consult their local consulate or travel agent before travelling.

Other Policies

Riding bicycles, rollerblades, skateboards, skates, in-line skates, hoverboards, or other conveyances in all indoor spaces is not allowed. Use of drones or camera drones in hotel areas are prohibited.

SERVICES & FACILITIES

A journey to the summit of luxury in the heart of nature

Welcoming Services

- Chocolate covered strawberries or dried fruit
- Sparkling wine
- Fresh orange juice or homemade lemonade
- Cold towel service in the lobby
- Check-in procedures organized by guest service agents
- Accompanying all guests to their rooms
- Food & Beverage room amenities on arrival day
- Complimentary bottled water, wet wipes and hanging card air freshener for the guest's vehicle at check-out time.
- Valet and luggage service

Privilege Services*

- Antalya Airport Complimentary Fast Track & CIP Lounge Service
- The Land of Legends Theme Park entrance & transfer
- Antalya Airport General Aviation Terminal CIP Access

Guest Services

- 24-hour Regnum Assist Services (888 or Whatsapp line +90 555 057 07 07)
- Multi-lingual staff
- 24-hour reception desk
- Concierge desk
- 24-hour dining
- Valet parking & car wash service (upon request)
- Shuttle to Carya & National Golf Clubs
- Turndown housekeeping service
- Safety deposit boxes
- Cold towel and sunglasses cleaning services at the beach
- Umbrella service on rainy days
- Wireless internet access
- Computer, photocopying, printing and scanning service in Business Center
- Beach & Pools
- Fitness Center
- Regnum Lounge for early check-in and late check-out
- ATM machine

Extra Charge Guest Services

- Spa & beauty center services
- Facial - body treatments, therapies and products
- Laundry & dry cleaning services
- Daily pavilion (cabana) rental
- Teppanyaki and Steakhouse Restaurant
- In-room dining services
- Private butler service
- Game Center
- Wine list & selected spirits
- Babysitting
- Meeting / banquet facilities
- Private organizations
- Fast internet connection (limited user)
- Water sports & private sports lessons
- Floodlit tennis court
- Exclusive luxury retail shops
- Hairdresser, market, shisha
- Photography and florist services
- Golf car, car & bicycle rental (Avis)
- Helicopter & yacht rental (depending on weather conditions)
- Airport transfer and taxi service
- Doctor / healthcare services
- Pharmacy services
- Lunch Box

*Terms and conditions apply. Please see page 50

SUMMER 2023

Life. Well lived.

4



SERVICES & FACILITIES

Honeymoon Services

- Private greeting & check-in with fresh flowers
- Romantic room decoration
- Romantic bathtub with rose petals and scented candles
- Complimentary bottle of sparkling wines, chocolate-dipped strawberries and macarons
- Complimentary in-room breakfast service at preferred day
- Romantic table setting at restaurant of choice (a la carte & extra charge restaurants)
- 15 % discount on Greendoor Spa treatments

Anniversary Services

- Complimentary celebration cake & fruit
- Bottle of rosé wine & fresh flowers
- Romantic table setting at restaurant of choice (a la carte & extra charge restaurants)
- 15 % discount on Greendoor Spa treatments

Disability & Accessibility Services

- Unpacking and packing service to single disabled guests
- Free of charge in-room breakfast service to disabled guests
- In-door shuttle with two seater mobility scooter
- Assisting the guests by serving the food in buffet restaurant
- Wheelchair and electric wheelchair allocation
- In-door pool lift chair
- Reserved tables at Olive Restaurant
- Reserved sunbed area at the beach
- Wheelchair Accessible Beach (beach wheelchair)
- Main entrance via ramp (10 cm high)
- Stepless entrance
- Wheelchair-accessible restrooms (ground & lobby floor, pools areas)
- Stepless entrance access to the restaurants (except Thai restaurant)
- Elevator to all floors
- Accessible guestrooms with 104 cm wide entrance
- In-resort shuttle with wheelchair ramp

Golden Key Concierge Services*

- Concierge services are provided by Les Clefs d'Or® International Members
- Travel arrangements
- Scheduled and charter flights ticket arrangement
- Airport CIP & Fast Track access reservations
- Airport transfers
- Supercar rental
- Luxury car rental
- Private jet
- Helicopter
- Formal limousine
- Yacht charter
- Concert & festival tickets
- Marriage proposal organization
- Special events transportation
- VIP reservations
- Mail or luggage delivery management
- Appointments with the doctor or other specialists.
- Chauffeur services
- Personal shopping
- Personal concierge (errand services)
- Private butler service
- Private security service
- Information about local attractions, activities, tours, night clubs, hotels, restaurants or places

*Extra charges may apply



KIDS CONCIERGE

Learn about the many experiences and amenities available for children at Regnum Carya
kidsconciierge@regnumhotels.com

Our Kids Concierge Agent assists with:

- Meeting & greeting on arrival
- Information on a variety of children's activities & facilities
- Information on baby nursery, feeding and care essential items
- Providing special baby food from the kitchen – answering all food & beverage related questions

Kids Facilities & Services

- Kids & Teenage Club
- Kids aquapark & pools
- Kids adventure park
- Kids amphitheatre (800 seats)
- Separate kids buffet and dining area in Olive Restaurant
- Kids Club Restaurant
- Fully equipped baby food prep corner in Olive Restaurant and Kids Club
- HIPP baby food products and healthy milk options at the buffet
- Preparing guest's baby food recipes*
- High chairs and bibs in the restaurants
- Kids menu at a la carte restaurants*
- Baby feeding room at beach area
- Diaper changing tables in public restrooms
- Disposable swim diapers at the pools & beach*

Extra charge kids services

- Organizing private babysitting
- Swimming lesson coach
- Dolphin swim & encounter activities at the Land of Legends Theme Park
- Private birthday parties
- Parent & child manicure, pedicure and nail art activities, (7-17 years old)
- Parent & child spa & hammam treatments (7-17 years old)
- Parent & child golf session

Room Amenities

- Chicco baby shampoo, lotion and sponge
- Kids bathrobe & slippers
- Kids drinks and snacks in the mini bar
- Cartoon TV channels in the rooms

Nursery Items*

- Baby crib / cot
- Cold mist humidifier
- Baby night lamp
- Safety bed rail for kids
- Baby audio monitor (by deposit)

Baby Gear*

- Stroller or twin stroller
- Transfer car seat
- High chairs and bibs

Health Products*

- Digital thermometer
- Nasal aspirator
- Baby nebulizer with mask

Diapering*

- Baby wipes
- Rash cream
- Changing mat

Feeding Essentials*

- Bottle warmer
- Bottle sterilizer
- Baby food jars in the mini bar
- Baby water
- Kids melamine plate & bowl
- High chair & bib

Bath Items*

- Baby bathtub and bath net
- Baby bath bucket and rinse cup
- Sink step stool
- Toilet potty seat
- Potty chair

*Upon request

SUMMER 2023

Life. Well lived.



ACCOMMODATION ROOM ESSENTIALS & AMENITIES

FEATURES

- Bedroom chairs and table set
- Bedside reading light
- Bolster pillow bedroom bench
- Sheer and blackout drapes
- Work / writing desk with adjustable lamp
- Custom made imported wood flooring
- Balcony / terrace with outdoor sofa set

BEDDING

- Signature Regnum bed
- Super king size bed (2,0x2,2 m.)
- Single full size bed (1,4x2,2 m.)
- Non-allergenic king pillow (60x90 cm.)
- Non-allergenic queen pillow (50x70 cm.)
- Signature 100% cotton
REGNUM linen set
- Pillow menu

BATHROOM

- Full marble bathroom with enclosed rain shower
- Separate bathtub, separate toilet
- Double sink vanity
- Bvlgari® bath & shower products
- Chicco® baby bath products
- Makeup mirror with lights
- Hair dryer

DRESSING ROOM

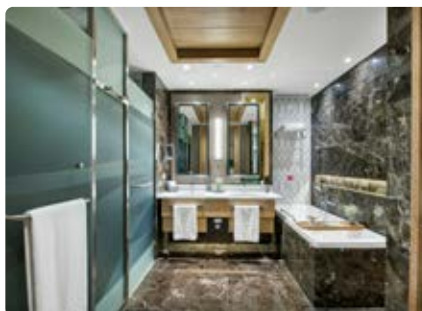
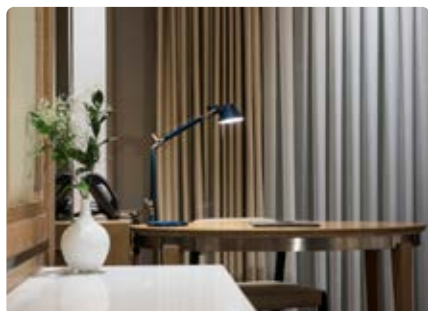
- Full length mirror
- Wood hangers
- Luggage rack
- Iron and ironing board
- Electronic safe box
- Pouf seat

TECH

- 55" LG mirror / LED IP TV
- 2 Cisco® IP phone
- Wireless internet access
- Media Hub
(Network, HDMI, Audio, USB,
UK & US electrical sockets)

SERVICES & AMENITIES

- Welcome amenities prepared by F&B
- Twice daily housekeeping service
- Room fragrance menu
- Mini bar restocked daily
- Nespresso® coffee machine





JADE ROOM

Land View- Sea View - Partial Sea View | Main Building | 62 sq m

MAXIMUM OCCUPANCY

- 3 Adults + 1 Infant

FEATURES

- 1 Bedroom
- Separate dressing room
- Bedroom chairs and table set
- Work / writing desk with adjustable lamp
- Bolster pillow bedroom bench
- Sheer and blackout drapes
- Custom made imported wood flooring
- Balcony with sofa set (12 sq m)

BEDDING

- 1 Super king bed or 2 single full beds
- Crib (available upon request)
- Rollaway bed (available upon request)
- Pillow menu

BATH

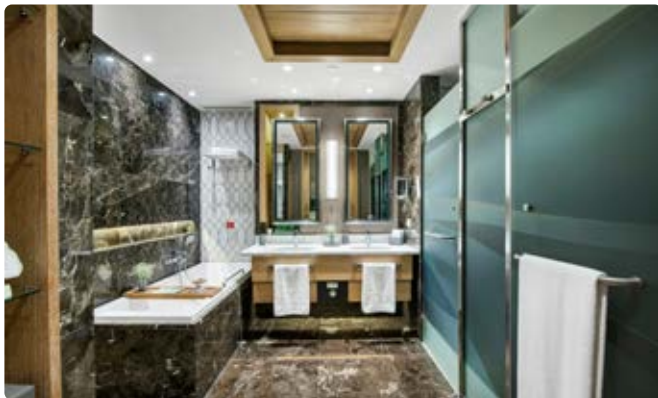
- Marble bathroom with enclosed rain shower, bathtub, separate toilet
- Double sink vanity
- Bvlgari® bath & shower products

TECH

- LG® 55" mirror IP TV
- Bose® TV speaker
- 2 Cisco® IP phone
- Wireless internet access
- Media hub

SERVICES & AMENITIES

- Welcome amenities prepared by F&B
- Twice daily housekeeping service
- Mini bar restocked daily
- Nespresso® coffee machine
- Iron and ironing board



Bathroom



Dressing Room



JADE JUNIOR

Partial Sea View | Main Building | 62 sq m
Online Sales Only

MAXIMUM OCCUPANCY

- 3 Adults + 1 Infant

FEATURES

- 1 Bedroom
- Bedroom chairs and table set
- Work / writing desk with adjustable lamp
- Bolster pillow bedroom bench
- Sheer and blackout drapes
- Custom made imported wood flooring
- Fitted wardrobe
- Balcony with sofa set (12 sq m)

BEDDING

- 1 Super king bed
- Crib (available upon request)
- Rollaway bed (available upon request)
- Pillow menu

BATH

- Marble bathroom
- Separate enclosed rain shower
- Separate toilet
- Bvlgari® bath & shower products

TECH

- LG® 55" mirror IP TV
- Bose® TV speaker
- 2 Cisco® IP phone
- Wireless internet access
- Media hub

SERVICES & AMENITIES

- Welcome amenities prepared by F&B
- Twice daily housekeeping service
- Mini bar restocked daily
- Nespresso® coffee machine
- Iron and ironing board



Bathroom



Bedroom



JADE SENIOR

Partial Sea View | Main Building | 62 sq m
Online Sales Only

MAXIMUM OCCUPANCY

- 3 Adults + 1 Infant

FEATURES

- 1 Bedroom
- Bedroom chairs and table set
- Work / writing desk with adjustable lamp
- Bolster pillow bedroom bench
- Sheer and blackout drapes
- Custom made imported wood flooring
- Fitted wardrobe
- Balcony with sofa set (12 sq m)

BEDDING

- 1 Super king bed
- Crib (available upon request)
- Rollaway bed (available upon request)
- Pillow menu

BATH

- Marble bathroom with enclosed rain shower, separate toilet
- Double sink vanity
- Mirror TV
- Freestanding whirlpool bathtub,
- Bvlgari® bath & shower products

TECH

- LG® 55" mirror IP TV
- Bose® TV speaker
- 2 Cisco® IP phone
- Wireless internet access
- Media hub

SERVICES & AMENITIES

- Welcome amenities prepared by F&B
- Twice daily housekeeping service
- Mini bar restocked daily
- Nespresso® coffee machine
- Iron and ironing board



Bathroom



Bedroom



JADE FAMILY

Two Bedrooms | Partial Sea View | Main Building | 125 sq m

MAXIMUM OCCUPANCY

- 5 Adults

FEATURES

- 2 bedrooms
- 1 Separate dressing room
- Bedroom chairs and table set
- Work / writing desk with adjustable lamp
- Bolster pillow bedroom bench
- Sheer and blackout drapes
- Custom made imported wood flooring
- Over sized private balcony / terrace with sofa set, sunbeds and umbrella (24 - 36 sq m)

BEDDING

- 1 Bedroom x 1 super king bed
- 1 Bedroom x 2 single full beds
- Crib (available upon request)
- Rollaway bed (available upon request)
- Pillow menu

BATH

- Marble bathroom with enclosed rain shower, bathtub, separate toilet
- Double sink vanity
- Bvlgari® bath & shower products
- 1 additional guest bathroom with enclosed rain shower and separate toilet

TECH

- 2 LG® 55" mirror IP TV
- Bose® TV speaker
- 4 Cisco® IP Phone
- Wireless internet access
- Media hub

SERVICES & AMENITIES

- Welcome amenities prepared by F&B
- Twice daily housekeeping service
- Mini bar restocked daily
- Nespresso® coffee machine
- Iron and ironing board



Bedroom



Bathroom



Dressing Room



JADE SUITE

One Bedroom | Sea View | Main Building | 125 sq m

MAXIMUM OCCUPANCY

- 4 Adults

FEATURES

- 1 Bedroom
- Living room with sitting area
- Separate dressing room
- Bedroom chairs and table set
- Work / writing desk with adjustable lamp
- Bolster pillow bedroom bench
- Sheer and blackout drapes
- Custom made imported wood flooring
- Open and glazed balconies with sofa set (12 + 8 sq m)

BEDDING

- 1 Super king bed
- Crib (available upon request)
- Rollaway bed (available upon request)
- Pillow menu

BATH

- 2 Bathrooms
- Marble bathroom with enclosed rain shower, bathtub, separate toilet
- Double sink vanity
- Bvlgari® bath & shower products

TECH

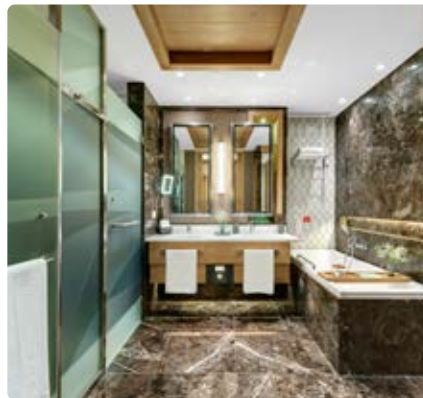
- 2 LG® 55" mirror IP TV
- Bose® TV speaker
- 4 Cisco® IP phone
- Wireless internet access
- Media hub

SERVICES & AMENITIES

- Welcome amenities prepared by F&B
- Twice daily housekeeping service
- Maxi bar restocked daily
- Nespresso® coffee machine
- Iron and ironing board



Living Room



Bathroom



Dressing Room



JADE PRESIDENTIAL SUITE

Two Bedrooms | Sea View | Main Building | 185 sq m



MAXIMUM OCCUPANCY

- 4 Adults

FEATURES

- 1 grand bedroom
- 1 guests bedroom separate entrance
- Living room with dining area
- Kitchenette with separate service entrance
- 2 separate dressing rooms
- Bedroom chairs and table set
- Work / writing desk with adjustable lamp
- Bolster pillow bedroom bench
- Sheer and blackout drapes
- Custom made imported wood flooring
- 3 balconies with sofa set and sunbeds (3x12 sq m)

BEDDING

- 1 Bedroom x 1 king bed
- 1 Bedroom x 2 single beds
- Crib (available upon request)
- Rollaway bed (available upon request)
- Pillow menu

BATH

- 2 Bathrooms
- Marble bathroom with enclosed rain shower, bathtub, separate toilet
- Double sink vanity
- Freestanding whirlpool bathtub and mirror TV in master bathroom
- Bvlgari® bath & shower products

TECH

- 3 LG® 55" mirror IP TV
- Bose® TV speaker
- 5 Cisco® IP phone
- Wireless internet access
- Media hub

SERVICES & AMENITIES

- Welcome amenities prepared by F&B
- Twice daily housekeeping service
- Maxi bar restocked daily
- Nespresso® coffee machine
- Iron and ironing board

*Please also see Exclusive Services page 30





JADE PRESIDENTIAL SUITE

Two Bedrooms | Sea View | Main Building | 185 sq m



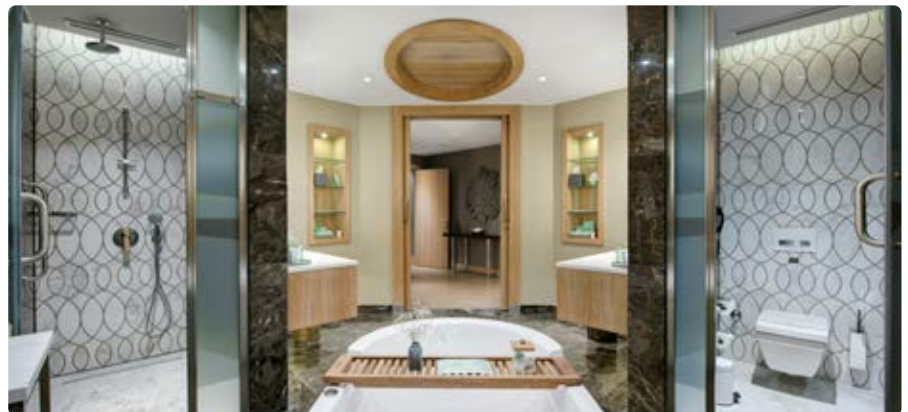
Bedroom



Kitchenette



Balcony



Bathroom



PEARL POOL ROOM

Shared Pool & Garden View | 62 sq m

MAXIMUM OCCUPANCY

- 3 Adults + 1 Infant

FEATURES

- 1 Bedroom
- Separate dressing room
- Bedroom chairs and table set
- Work / writing desk with adjustable lamp
- Bolster pillow bedroom bench
- Sheer and blackout drapes
- Custom made imported wood flooring
- Terrace with outdoor sofa set, sunbeds and umbrella (12 sq m)
- Direct access to shared pool

BEDDING

- 1 Super king bed or 2 single full beds
- Crib (available upon request)
- Rollaway bed (available upon request)
- Pillow menu

BATH

- Marble bathroom with enclosed rain shower, bathtub, separate toilet
- Double sink vanity
- Bvlgari® bath & shower products

TECH

- LG® 55" mirror IP TV
- 2 Cisco® IP phone
- Wireless internet access
- Media hub

SERVICES & AMENITIES

- Welcome amenities prepared by F&B
- Twice daily housekeeping service
- Mini bar restocked daily
- Nespresso® coffee machine
- Iron and ironing board



Dressing Room



Bathroom



Shared Pool



AMBER LAGOON SUITE

One Bedroom | Shared Pool & Garden View | 90 sq m



MAXIMUM OCCUPANCY

- 4 Adults + 1 Child + 1 Infant

INDOOR FEATURES

- 1 Bedroom
- Free-standing bathtub in bedroom
- Living room with dining area
- Convertible sofa bed
- Separate dressing room
- Bedroom sofa & bench
- Sheer and blackout drapes
- Underfloor heating system
- Custom made imported wood flooring

OUTDOOR FEATURES

- Terrace with outdoor sofa set, dining area, sunbeds and umbrella (60 sq m)
- Direct access to shared pool

BEDDING

- 1 Super King bed
- Crib (available upon request)
- Rollaway bed (available upon request)
- Pillow menu

BATH

- Travertine bathroom with enclosed rain shower, separate toilet
- Double sink vanity
- Bvlgari® bath & shower products

TECH

- 2 LG® IP TV (65" / 75")
- 2 Cisco® IP phone
- Wireless internet access
- Media hub

SERVICES & AMENITIES

- Welcome amenities prepared by F&B
- Twice daily housekeeping service
- Mini bar restocked daily
- Nespresso® coffee machine
- Iron and ironing board

*Please also see Exclusive Services page 30



Bedroom & Living Room



Living Room



Bathroom



PEARL POOL FAMILY

Two Bedrooms | Shared Pool & Garden View | 124 sq m



MAXIMUM OCCUPANCY

- 6 Adults + 2 Infant

FEATURES

- 2 Bedrooms
- 2 Separate dressing rooms
- Bedroom chairs and table set
- Work / writing desk with adjustable lamp
- Bolster pillow bedroom bench
- Sheer and blackout drapes
- Custom made imported wood flooring
- Terrace with outdoor sofa set, sunbeds and umbrella (24 sq m)
- Direct access to shared pool

BEDDING

- 1 Bedroom x 1 super king bed
- 1 Bedroom x 2 single full beds
- Crib (available upon request)
- Rollaway bed (available upon request)
- Pillow menu

BATH

- 2 Bathrooms
- Marble bathroom with enclosed rain shower, bathtub, separate toilet
- Double sink vanity
- Bvlgari® bath & shower products

TECH

- 2 LG® 55" mirror IP TV
- 4 Cisco® IP phone
- Wireless internet access
- Media hub

SERVICES & AMENITIES

- Welcome amenities prepared by F&B
- Twice daily housekeeping service
- Maxi bar restocked daily
- Nespresso® coffee machine
- Iron and ironing board

*Please also see [Exclusive Services page 30](#)



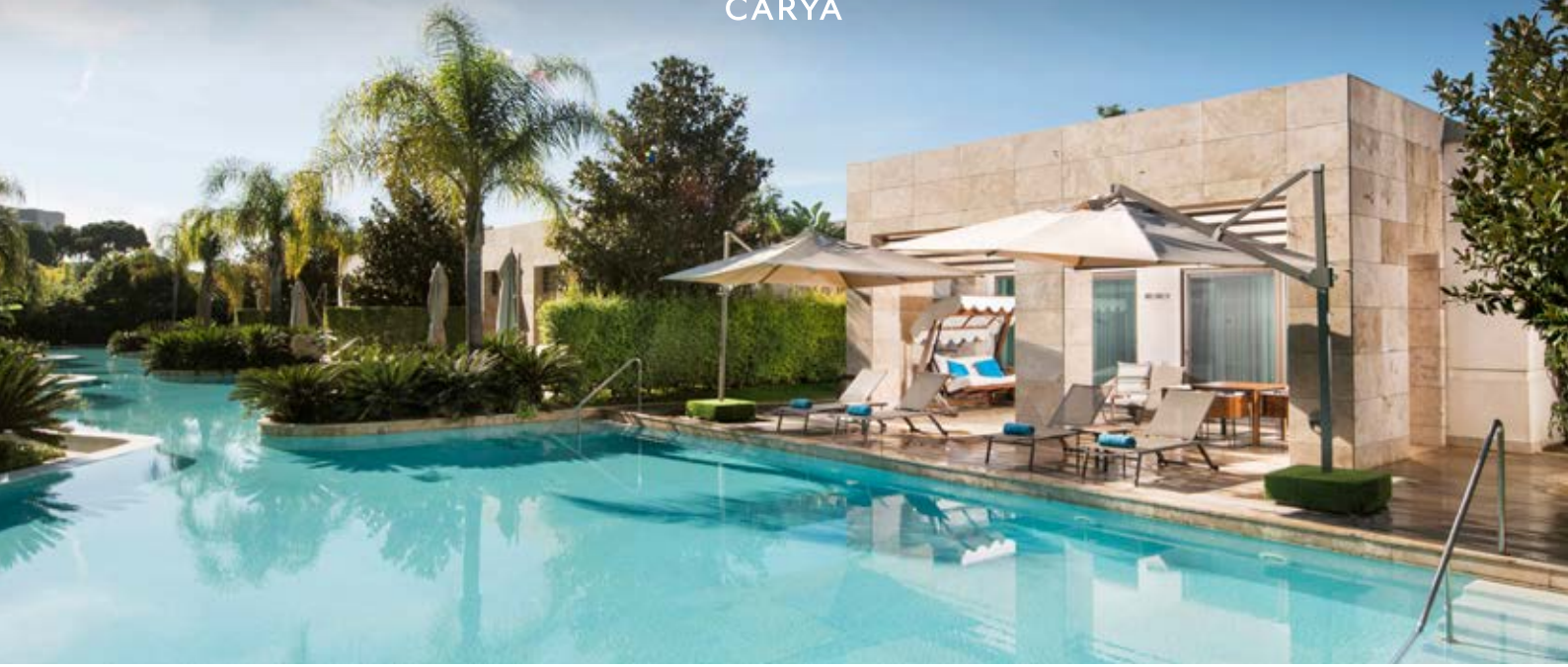
Bedroom



Dressing Room & Bathroom



Shared Pool



PEARL POOL SUITE

One Bedroom | Shared Pool & Garden View | 125 sq m



MAXIMUM OCCUPANCY

- 4 Adults

FEATURES

- 1 Bedroom
- Living room with sitting area
- Separate dressing room
- Bedroom sofa set with table
- Work / writing desk with adjustable lamp
- Bolster pillow bedroom bench
- Sheer and blackout drapes
- Custom made imported wood flooring
- Terrace with outdoor sofa set, dining area, swing seat, sunbeds and umbrella (24 sq m)
- Direct access to shared pool

BEDDING

- 1 Super king bed
- Crib (available upon request)
- Rollaway bed (available upon request)
- Pillow menu

BATH

- Marble bathroom with enclosed rain shower, bathtub, separate toilet
- Double sink vanity, mirror TV
- Bvlgari® bath & shower products
- 1 additional guest bathroom with enclosed rain shower and separate toilet

TECH

- 2 LG® 55" mirror IP TV
- 4 Cisco® IP phone
- Wireless internet access
- Media hub

SERVICES & AMENITIES

- Welcome amenities prepared by F&B
- Twice daily housekeeping service
- Mini bar restocked daily
- Nespresso® coffee machine
- Iron and ironing board

*Please also see Exclusive Services page 30



Living Room



Dressing room & Bathroom



Shared Pool



AMBER LAGOON VILLA

Two Bedrooms | Shared Pool & Garden View | 155 sq m



MAXIMUM OCCUPANCY

- 6 Adults + 2 Child + 1 Infant

INDOOR FEATURES

- 2 Bedrooms
- Living room with dining area
- Convertible sofa bed
- Fully equipped kitchenette, washing machine
- 2 Separate dressing rooms
- Bedroom sofa & bench
- Sheer and blackout drapes
- Underfloor heating system
- Custom made imported wood flooring

OUTDOOR FEATURES

- Terrace with outdoor sofa set, dining area, sunbeds and umbrella (105 sq m)
- Direct access to shared pool

BEDDING

- 1 Bedroom x 1 Super King bed
- 1 Bedroom x 2 Single Full beds
- Crib (available upon request)
- Rollaway bed (available upon request)
- Pillow menu

BATH

- 2 bathrooms
- Travertine bathroom with enclosed rain shower, separate toilet
- Bathtub in master bedroom
- Double sink vanity
- Bvlgari® bath & shower products

TECH

- 2 LG® 65" IP TV
- 1 LG® 75" IP TV in living room
- 3 Cisco® IP phone
- Wireless internet access
- Media hub

SERVICES & AMENITIES

- Welcome amenities prepared by F&B
- Twice daily housekeeping service
- Maxi bar restocked daily
- Nespresso® coffee machine
- Iron and ironing board

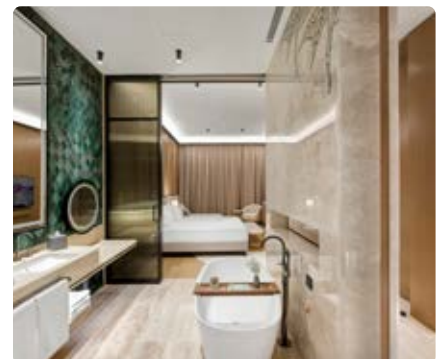
*Please also see Exclusive Services page 30



Living Room



Bedroom



Bathroom & Dressing Room



SAPPHIRE VILLA

Three Bedrooms | Golf & Pool View | Private Villa | 400 sq m



MAXIMUM OCCUPANCY

- 6 Adults

INDOOR FEATURES

- 3 Bedrooms
- Living room with dining area
- Fully equipped kitchenette, washing machine
- 2 Separate dressing rooms
- Bedroom sofa set with table
- Work / writing desk with adjustable lamp
- Bolster pillow bedroom bench
- Sheer and blackout drapes
- Custom made imported wood flooring

OUTDOOR FEATURES

- Terrace with outdoor sofa set, dining area, swing seat, sunbeds and umbrella (100 sq m)
- Extra charge heatable* private pool (140 sq m)
- Garden and pool size: 400+500 sq m

BEDDING

- 1 Bedroom x 1 super king bed (2x2,2 m.)
- 1 Bedroom x 2 single beds (1,4x2,2 m.)
- 1 Bedroom x 1 king bed (1,8x2 m.)
- Crib (available upon request)
- Rollaway bed (available upon request)
- Pillow menu

BATH

- 3 bathrooms
- 1 marble bathroom with enclosed rain shower, bathtub, separate toilet
- Double sink vanity
- 2 marble bathrooms with enclosed rain shower and separate toilet
- Bvlgari® bath & shower products

TECH

- 4 LG® 55" mirror IP TV
- 9 Cisco® IP phone
- Apple® TV box**
- Wireless internet access
- Media hub

SERVICES

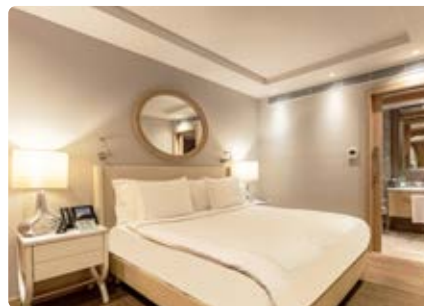
- Welcome amenities prepared by F&B
- Twice daily housekeeping service
- Maxi bar restocked daily
- Nespresso® coffee machine
- Iron and ironing board

*Please also see Exclusive Services page 30

* Please ask your assistant for pool heating and cost information. ** Upon request



Bedroom



Bedroom (King Bed)



Living Room



EMERALD VILLA

Three Bedrooms | Pool View | Private Villa | 600 sq m



MAXIMUM OCCUPANCY

- 6 Adults

INDOOR FEATURES

- 3 Bedrooms
- Living room with dining area
- Fully equipped private kitchen, washing machine
- 1 Separate dressing room
- Bedroom chairs and table set
- Work / writing desk with adjustable lamp
- Sheer and blackout drapes
- Custom made imported wood flooring

OUTDOOR FEATURES

- Terrace with outdoor sofa set, dining area, swing seat, sunbeds and umbrella (120 sq m)
- Extra charge heatable* private pool (120 sq m)
- Villa + garden & pool size: 600+800 sq m

BEDDING

- 1 Bedroom x 1 super king bed (2x2,2 m.)
- 2 Bedrooms x 2 single full beds (1,4x2,2 m.)
- Crib (available upon request)
- Rollaway bed (available upon request)
- Pillow menu

BATH

- 3 bathrooms
- 1 marble bathroom with enclosed rain shower, bathtub, separate toilet
- Double sink vanity
- Sauna and mirror TV in master bathroom
- 2 marble bathrooms with enclosed rain shower and separate toilet
- Bvlgari® bath & shower products

TECH

- 4 LG® 55" IP TV (3 mirror)
- 7 Cisco® IP phone
- Apple® TV box
- Wireless internet access
- Media hub

SERVICES & AMENITIES

- Welcome amenities prepared by F&B
- Twice daily housekeeping service
- Maxi bar restocked daily
- Nespresso® coffee machine
- Iron and ironing board

*Please also see Exclusive Services page 30

* Please ask your assistant for pool heating and cost information.



Living Room & Separate Kitchen



Bathroom & Sauna



Dressing Room



Master Bedroom

EMERALD VILLA

Three Bedrooms | Pool View | Private Villa | 600 sq m



Living Room



2nd Bedroom



Kitchen



3rd Bedroom



TIARA VILLA

Five Bedrooms | Golf & Pool View | Private Duplex Villa | 1500 sq m



MAXIMUM OCCUPANCY

- 10 Adults

INDOOR FEATURES

- 5 Bedrooms
- Living room with fireplace, sitting and formal dining area
- Fully equipped Gaggenau® kitchen, washing machine
- Fitness room, massage room and sauna area on the ground floor
- 4 Separate dressing rooms
- Bedroom sofa set with table
- Work / writing desk with adjustable lamp
- Bolster pillow bedroom bench
- Sheer and blackout drapes
- Custom made imported wood flooring
- Underfloor heating

OUTDOOR FEATURES

- Extra charge heatable* private pool (200 sqm), kids pool (5 sq m), outdoor whirlpool
- Terrace with outdoor sofa set, dining area, swing seat sunbeds and umbrellas (120 sq m)
- Villa + garden & pool size: 1500+1300 sq m

BEDDING

- 1st floor:
 - 2 Bedrooms x 1 super king bed (2x2,2 m)
 - 1 Bedroom x 2 single full beds (1,4x2,2 m)
- Ground floor:
 - 1 Bedroom x 1 king bed (1,8x2 m)
 - 1 Bedroom x 2 single full beds (1,4x2,2 m)
- Crib (available upon request)
- Rollaway bed (available upon request)
- Pillow menu

BATH

- 5 Bathrooms
- Marble bathroom with enclosed rain shower, bathtub, mirror TV separate toilet

- Double sink vanity
- In-ground whirlpool bathtub and bioethanol fireplace in master bathroom
- Bvlgari® bath & shower products

TECH

- 78" Samsung® Curve 4K TV in living room
- 4 LG® 55" mirror IP TV + 2 LG 42" IP TV
- 16 Cisco® IP phone
- Apple® TV box
- Wireless internet access
- Media hub

SERVICES

- Welcome amenities prepared by F&B
- Twice daily housekeeping service
- Maxi bar restocked daily
- Nespresso® coffee machine
- Iron and ironing board

*Please also see Exclusive Services page 30

* Please ask your assistant for pool heating and cost information.



Kitchen



Bathroom



Dressing Room



TIARA VILLA

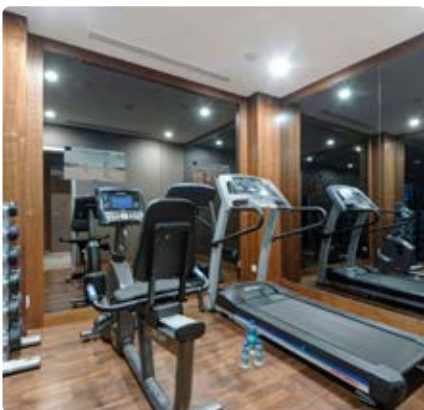
Five Bedrooms | Golf & Pool View | Private Duplex Villa | 1500 sq m



Living Room



Massage Room & Sauna



Fitness Room



2nd Bedroom



CROWN VILLA

Six Bedrooms + Two Bedrooms | Golf & Pool View | Triplex Private Villa | 3500 sq m

MAXIMUM OCCUPANCY

- 14 Adults

INDOOR FEATURES

- 6 + 2 Bedrooms
- Additional 1st bedroom in The Cave facility. 2nd bedroom in the Playstation room with convertible sofa bed (1,4x2 m.) and bathroom (upon request)
- 6 Separate dressing rooms
- Bedroom chairs and table set
- Bolster pillow bedroom bench
- Work / writing desk with adjustable lamp
- Sheer and blackout drapes
- Custom made imported wood flooring
- 2 Living rooms with sitting area
- 1 Fireplace with fire pit
- Shiffini® design & fully equipped Gaggenau® kitchen and formal dining room
- Spa & Wellness area located on the ground floor
- Turkish hammam, sauna, steam room, shower, massage room, fitness room
- Panatta cardio and fitness equipment designed by "Pininfarina"
- 2nd floor with living room, outdoor terrace, barbecue, dining table, outdoor sofa set and umbrellas
- Private meeting & executive room
- Bulletproof windows
- Electric window blinds and roller shutters
- Laundry room, professional kitchen and security office
- Villa elevator, underfloor heating system

OUTDOOR FEATURES

- Extra charge heatable* private pool (442 sq m)
- Pool bar, pool gazebo
- Passion® The Theatre Spa outdoor hot tub (3,8x2,28x1,16 m.)
- Terrace with outdoor sofa set, dining area, swing seat, sunbeds and umbrellas (120 sq m)
- Villa + garden & pool size: 3500+1500 sq m

BEDDING

- 2nd floor:
 - 1 Bedroom x 1 extra king bed (2x2 m.)
- 1st floor:
 - 1 bedroom x 1 signature Crown bed (2,2x2,2 m.)
 - 1 bedroom x 1 super king bed (2x2,2 m.)
 - 1 bedroom x 2 single full beds (1,4x2,2 m.)
- Ground floor:
 - 1 Bedroom (disabled) x 1 super king bed (2x2,2 m.)
 - 1 bedroom x 2 single beds (1,4x2,2 m.)
- Crib (available upon request)
- Rollaway bed (available upon request)
- Pillow menu

BATH

- 8 Bathrooms
- Marble bathroom with enclosed rain shower
- Bathtub, mirror TV, double sink vanity, separate toilet
- In-ground Teuco seaside whirlpool bathtub 2,15x2,0 m, sauna and SensoWash® shower-toilet in master bathroom
- Bvlgari® bath & shower products

THE CAVE (GROTTO) FACILITY

- Private sunbathing area on white sand
- Waterfall pool, hidden indoor heated pool, swim-up bar
- Cinema lounge with whirlpool, shower and toilet
- Whirlpool bedroom with round bed (Ø 2,3 m.) and private terrace

TECH

- 88" / 78" Samsung® Curve 4K TV in living rooms
- Bang & Olufsen® home theatre system in living room
- 6 Samsung® 55" TV
- 25 Cisco® IP phone
- Apple® TV box
- Smart room control system
- DJ set-up, sound & light system
- Playstation & game room
- Wireless internet access
- Media hub

SERVICES & AMENITIES

- Welcome amenities prepared by F&B
- Private housekeeping service
- Maxi bar restocked daily
- Nespresso® coffee machine
- Iron and ironing board

*Please also see Exclusive Services page 30

*Please ask your assistant for pool heating and cost information.

SUMMER 2023

Life. Well lived.

25



CROWN VILLA

Six Bedrooms + Two Bedrooms | Golf & Pool View
 Triplex Private Villa | 3500 sq m



Living Room



Meeting Room



Turkish Hamman



Kitchen & Dining Area



CROWN VILLA THE CAVE

Unique hidden living space pool and bedroom in Grotto style



Cinema lounge



Bedroom



Pool Bar



Swim-up bar

ACCOMMODATION

ROOM COMPARISON

									
Rooms	Location	View	Maximum Occupancy	Bedroom	Beds*	Shower + Bathtub	Living Room	Size**	Total
Jade Room Land View	Main Building	Land	3 Adults + 1 Infant	1	1 Double or 2 Single	1 + 1	.	62 sq m	207
Jade Room Partial Sea View	Main Building	Partial Sea	3 Adults + 1 Infant	1	1 Double or 2 Single	1 + 1	.	62 sq m	76
Jade Room Sea View	Main Building	Sea	3 Adults + 1 Infant	1	1 Double or 2 Single	1 + 1	.	62 sq m	93
Jade Junior Room Online Sales Only	Main Building	Partial Sea	3 Adults + 1 Infant	1	1 Double	1 + 0	.	62 sq m	12
Jade Senior Room Online Sales Only	Main Building	Partial Sea	3 Adults + 1 Infant	1	1 Double	1 + 1 (1 bathtub with Jacuzzi)	.	62 sq m	12
Jade Family	Main Building	Partial Sea	5 Adults	2	1 Double + 2 Single	2 + 1	.	125 sq m	28
Pearl Pool Room	Pearl Shared Pool	Garden & Pool	3 Adults + 1 Infant	1	1 Double or 2 Single	1 + 1	.	62 sq m	60
Pearl Pool Family	Pearl Shared Pool	Garden & Pool	6 Adults + 2 Infant	2	1 Double + 2 Single	2 + 2	.	124 sq m	24
Suites	Location	View	Maximum Occupancy	Bedroom	Beds*	Shower + Bathtub	Living Room	Size**	Total
Jade Suite	Main Building	Sea	4 Adults	1	1 Double	2 + 2	1	125 sq m	8
Jade Presidential Suite	Main Building	Sea	4 Adults	2	1 Double + 2 Single	2 + 2 (1 bathtub with Jacuzzi)	1 + 1 (1 kitchenette)	185 sq m	2
Pearl Pool Suite	Pearl Shared Pool	Garden & Pool	4 Adults	1	1 Double	2 + 1	1	125 sq m	11
Amber Lagoon Suite	Amber Shared Pool	Garden & Pool	4 Adults + 1 child + 1 Infant	1	1 Double	1	1 (Living Area)	90 sq m	44
Villas	Location	View	Maximum Occupancy	Bedroom	Beds*	Shower + Bathtub	Living Room + Kitchen	Size***	Total
Amber Lagoon Villa	Amber Shared Pool	Garden & Pool	6 Adults + 2 Child + 1 Infant	2	1 x 1 Double + 1 x 2 Single	2 + 1	1 + 1 (1 kitchenette)	155 sq m	15
Sapphire Villa	Private Pool Villa	Garden & Pool	6 Adults	3	2 x 1 Double + 1 x 2 Single	3 + 2	1 + 1 (1 kitchenette)	400 + 500 sq m (Heated pool 140sq m)	13
Emerald Villa	Private Pool Villa	Garden & Pool	6 Adults	3	1 x 1 Double + 2 x 2 Single	3 + 1	1 + 1	600 + 800 sq m (Heated pool 120 sq m)	4
Tiara Villa	Private Pool Villa (Duplex)	Golf & Pool	10 Adults	5	3 x 1 Double + 2 x 2 Single	5 + 3 (1 bathtub with Jacuzzi)	1 + 1	1500 + 1300 sq m (Heated pool 200 sq m)	2
Crown Villa	Private Pool Villa (Triplex)	Golf & Pool	14 Adults	6+ (2)	4 x 1 Double + 2 x 2 Single + 1 x 1 round bed + 1 x 1 sofa bed	8 + 5 (5 bathtubs with Jacuzzi)	2 + 1	3500 + 1500 sq m (Heated pool 442 sq m)	1

* Rollaway bed (1,0 x 2,0m) and Crib (0,75 x 1,1m) - available upon request ** Including balcony / terrace - all sizes are approximate
*** Villa & terrace + pool & garden - all sizes are approximate

ROOM AMENITIES & SERVICES

	Jade Room	Jade Room Partial Sea View	Jade Room Sea View	Jade Junior Room	Jade Senior Room	Jade Suite	Jade Family	Jade Presidential	Pearl Pool Room	Amber Lagoon Suite	Pearl Pool Family	Pearl Pool Suite	Amber Lagoon Villa	Sapphire Villa	Emerald Villa	Tiara Villa	Crown Villa
Antalya Airport Fast Track Services & CIP Lounge* (4 Nights stay, direct departure flights from international terminal)	✓	✓	✓	✓	✓	✓	✓	✓	✓	✓	✓	✓	✓	✓	✓	✓	✓
Digital key card system	✓	✓	✓	✓	✓	✓	✓	✓	✓	✓	✓	✓	✓	✓	✓	✓	✓
Bvlgari® bath & shower products	✓	✓	✓	✓	✓	✓	✓	✓	✓	✓	✓	✓	✓	✓	✓	✓	✓
Antibacterial liquid hand soap	✓	✓	✓	✓	✓	✓	✓	✓	✓	✓	✓	✓	✓	✓	✓	✓	✓
Dental kit with Marvis® toothpaste	✓	✓	✓	✓	✓	✓	✓	✓	✓	✓	✓	✓	✓	✓	✓	✓	✓
Enclosed rain shower	✓	✓	✓	✓	✓	✓	✓	✓	✓	✓	✓	✓	✓	✓	✓	✓	✓
Bathtub and bathtub tray	✓	✓	✓		✓	✓	✓	✓	✓	✓	✓	✓	✓	✓	✓	✓	✓
Jacuzzi						✓		✓									✓
Double sink vanity	✓	✓	✓		✓	✓	✓	✓	✓	✓	✓	✓	✓	✓	✓	✓	✓
Hair dryer	✓	✓	✓	✓	✓	✓	✓	✓	✓	✓	✓	✓	✓	✓	✓	✓	✓
Bathrobe and slippers	✓	✓	✓	✓	✓	✓	✓	✓	✓	✓	✓	✓	✓	✓	✓	✓	✓
Makeup / shaving mirror with light	✓	✓	✓	✓	✓	✓	✓	✓	✓	✓	✓	✓	✓	✓	✓	✓	✓
Bathroom products kit for men and women	✓	✓	✓	✓	✓	✓	✓	✓	✓	✓	✓	✓	✓	✓	✓	✓	✓
Kids bathrobe, slippers, shampoo and lotion (0-12)	✓	✓	✓	✓	✓	✓	✓	✓	✓	✓	✓	✓	✓	✓	✓	✓	✓
Lockable dressing room with luggage rack	✓	✓	✓			✓	✓	✓	✓	✓	✓	✓	✓	✓	✓	✓	✓
Fitted wardrobe and luggage rack				✓	✓												
Iron and ironing board	✓	✓	✓	✓	✓	✓	✓	✓	✓	✓	✓	✓	✓	✓	✓	✓	✓
Digital safe	✓	✓	✓	✓	✓	✓	✓	✓	✓	✓	✓	✓	✓	✓	✓	✓	✓
Digital scale (upon request)	✓	✓	✓	✓	✓	✓	✓	✓	✓	✓	✓	✓	✓	✓	✓	✓	✓
Full length mirror	✓	✓	✓	✓	✓	✓	✓	✓	✓	✓	✓	✓	✓	✓	✓	✓	✓
Beach bag	✓	✓	✓	✓	✓	✓	✓	✓	✓	✓	✓	✓	✓	✓	✓	✓	✓
Shoehorn, shoe shine sponge and shoe mitt	✓	✓	✓	✓	✓	✓	✓	✓	✓	✓	✓	✓	✓	✓	✓	✓	✓
Clothes brush	✓	✓	✓	✓	✓	✓	✓	✓	✓	✓	✓	✓	✓	✓	✓	✓	✓
Bathroom pouf seat	✓	✓	✓	✓	✓	✓	✓	✓	✓	✓	✓	✓	✓	✓	✓	✓	✓
Cisco® IP phone	✓	✓	✓	✓	✓	✓	✓	✓	✓	✓	✓	✓	✓	✓	✓	✓	✓
Bose® TV speaker system	✓	✓	✓	✓	✓	✓	✓	✓									
Mirror/LED TV in bathroom					✓			✓				✓			✓	✓	✓
Wireless internet	✓	✓	✓	✓	✓	✓	✓	✓	✓	✓	✓	✓	✓	✓	✓	✓	✓
Media hub (ethernet, HDMI, audio and USB inputs)	✓	✓	✓	✓	✓	✓	✓	✓	✓	✓	✓	✓	✓	✓	✓	✓	✓
UK and US electrical sockets	✓	✓	✓	✓	✓	✓	✓	✓	✓	✓	✓	✓	✓	✓	✓	✓	✓
Air conditioning	✓	✓	✓	✓	✓	✓	✓	✓	✓	✓	✓	✓	✓	✓	✓	✓	✓
Bedside reading lamp	✓	✓	✓	✓	✓	✓	✓	✓	✓	✓	✓	✓	✓	✓	✓	✓	✓
Work / writing desk with adjustable lamp	✓	✓	✓	✓	✓	✓	✓	✓	✓	**	✓	✓	**	✓	✓	✓	✓
Balcony / terrace sofa set	✓	✓	✓	✓	✓	✓	✓	✓	✓	✓	✓	✓	✓	✓	✓	✓	✓
In-room fresh flowering plant	✓	✓	✓	✓	✓	✓	✓	✓	✓	✓	✓	✓	✓	✓	✓	✓	✓
Pillow menu	✓	✓	✓	✓	✓	✓	✓	✓	✓	✓	✓	✓	✓	✓	✓	✓	✓
Room fragrance menu	✓	✓	✓	✓	✓	✓	✓	✓	✓	✓	✓	✓	✓	✓	✓	✓	✓
Nespresso® coffee machine and kettle	✓	✓	✓	✓	✓	✓	✓	✓	✓	✓	✓	✓	✓	✓	✓	✓	✓
Mini bar and snack bar	✓	✓	✓	✓	✓	✓	✓	✓	✓	✓	✓	✓	✓	✓	✓	✓	✓
Welcome fruit and cake on arrival	✓	✓	✓	✓	✓	✓	✓	✓	✓	✓	✓	✓	✓	✓	✓	✓	✓
Milk for ages 0-6, Nesquik® for ages 7-12 in the mini bar	✓	✓	✓	✓	✓	✓	✓	✓	✓	✓	✓	✓	✓	✓	✓	✓	✓
Turndown service with Godiva® chocolate	✓	✓	✓	✓	✓	✓	✓	✓	✓	✓	✓	✓	✓	✓	✓	✓	✓
Newspapers printed in Turkey (upon request)	✓	✓	✓	✓	✓	✓	✓	✓	✓	✓	✓	✓	✓	✓	✓	✓	✓

*Terms & conditions apply. Please see page 48
** upon request

EXCLUSIVE SERVICES

Guest Assistant | Private Reception & Lounge
Private Beach Club and Restaurant

Services & Amenities	Amber Lagoon Suite	Pearl Pool Suite	Pearl Pool Family	Amber Lagoon Villa	Jade Presidential Suite	Sapphire Villa	Emerald Villa	Tiara Villa	Crown Villa
Antalya Airport Fast Track Services & CIP Lounge* (4 Nights min. stay, direct departure flights from international terminal)	✓	✓	✓	✓	✓	✓	✓	✓	✓
Antalya Airport general aviation terminal CIP access* (7 Nights min. stay, domestic / international flights arrival & departure)					✓	✓	✓	✓	✓
Round trip VIP airport transfer* (7 nights min. stay)				✓	✓	✓	✓	✓	✓
Round trip helicopter transfer (7 nights min. stay / 4 pax)*								✓	✓
Private check-in Villa				✓	✓	✓	✓	✓	✓
Check-in at Villa Lounge*	✓	✓	✓						
Villa Guests assistant service	✓	✓	✓	✓	✓	✓	✓	✓	✓
Greeting with fresh flowers & farewell	✓	✓	✓	✓	✓	✓	✓	✓	✓
Welcome F&B amenities	✓	✓	✓	✓	✓	✓	✓	✓	✓
Custom mini bar arrangement for guest	✓	✓	✓	✓	✓	✓	✓	✓	✓
Bvlgari® branded bath & shower products	✓	✓	✓	✓	✓	✓	✓	✓	✓
The Land of Legends Theme Park (entrance & transfer)	✓	✓	✓	✓	✓	✓	✓	✓	✓
Free game center	✓	✓	✓	✓	✓	✓	✓	✓	✓
PlayStation** (upon request & daily allocation)						✓	✓	✓	✓
Dom Pérignon® Champagne (on arrival day)					✓	✓	✓	✓	✓
Moët & Chandon Impérial Brut Champagne (on arrival day)		✓	✓	✓					
Free In-room dining service				✓	✓	✓	✓	✓	✓
Private pool free cocktail service (12.00-17.00)						✓	✓	✓	
Laundry services / washing, ironing, dry cleaning								✓	✓
Laundry services / washing, ironing				✓	✓	✓	✓		
Alia Beach Club	✓	✓	✓	✓	✓	✓	✓	✓	✓
Amber Villa Restaurant & Bar	✓	✓	✓	✓	✓	✓	✓	✓	✓
Beach pavilions and F&B service					✓	✓			
Pier pavilions and F&B service							✓	✓	✓
Tiara pier pavilion and F&B service								✓	
Crown pier pavilion and F&B service									✓
Golf car allocation					✓	✓	✓	✓	✓
Butler Service (Shared)				✓					
Private butler service (09:00 - 21:00)						✓	✓	✓	✓
Private chef & bartender									✓
Private chauffeur									✓
Mercedes Maybach® allocation									✓

*Terms & conditions apply. Please see page 50

**Please be advised that damage to or loss of the console/player will be charged €150 / €1000 fee.



DINING

24-Hour Dining Experience at Regnum Carya

Regnum Carya's master chefs always serve you the best flavours of your choice with 1 buffet, 2 child-friendly buffets, 10 fine dining restaurants, 4 casual dining restaurants, 1 patisserie & chocolatier, 1 Turkish bakery & patisserie and 24-hour in-room dining service.

BUFFET DINING

Venue	Concept	Menu	Operation Hours	Location	Service Area & Details	Inclusive
Olive Restaurant	Welcoming with sparkling wine, live-action cooking stations, nightly themed buffet, wine boutique, patisserie & ice cream room, delicatessen & cheese room, bakery room, healthy & diet corner, fresh juice bar and Olive Premium full bar	Open fine buffet	Breakfast 6.30 a.m. - 11.00 a.m. Lunch 12.30 p.m. - 3.00 p.m. Dinner 7.00 p.m. - 10.00 p.m. Sunday Brunch 11.00 a.m. - 3.00 p.m.	Main building ground floor (-1)	Indoor dining area / glazed terrace & outdoor heated terrace	✓
Jr. Gourmet Restaurant	Child - friendly buffet, baby food corner & equipment, HIPPIE brand baby food <small>Hipp (rabbit meat, beef and turkey meat varieties are not available in Turkey)</small>	Open buffet	Breakfast 6.30 a.m. - 11.00 a.m. Lunch 12.30 p.m. - 3.00 p.m. Dinner 7.00 p.m. - 10.00 p.m.	Olive Restaurant	Indoor dining area	✓
Chuckles Kids Club Restaurant	Child-friendly buffet baby food corner & equipment	Open buffet	Lunch 12.00 p.m. - 2.00 p.m. Tea time 4.00 p.m. - 5.00 p.m. Dinner 6.00 p.m. - 8.00 p.m.	Chuckles Kids Club	Indoor dining area	✓

Restaurant and bar operating hours or days may change due to adverse weather conditions, technical reasons and guest requests.



FINE DINING*

Venue	Concept	Menu	Operation Hours	Location	Service Area & Details	Inclusive
Tramonto	Modern Italian Cuisine regional Italian specialties, innovative pizza and pasta dishes	À la carte	Dinner 7.00 p.m.-11.00 p.m.	Main building Lobby floor	Indoor dining area & terrace	✓
Köz Ocakbaşı	Traditional Turkish Grill & Kebab	À la carte	Dinner 7.00 p.m.-11.00 p.m.	Main building Lobby Floor	Ocakbaşı grill counter / indoor dining area & outdoor terrace	✓
Kushimoto	Contemporary Japanese Cuisine & Sushi Bar	À la carte	Dinner 7.00 p.m.-11.00 p.m.	Main building Lobby Floor	Sushi bar counter / indoor dining area & outdoor terrace	✓
Teppanyaki	Authentic Japanese cuisine cooked fresh in front of the guests	À la carte	Dinner 7.00 p.m.-11.00 p.m.	Main building Lobby floor (in Kushimoto)	Teppanyaki counters	Extra Charge (Menu Prices)
Seahorse	Fish & seafood dishes and selection of shellfish and caviars at extra charge	À la carte	Dinner 7.00 p.m.-11.00 p.m.	Main building Lobby floor	Grill bar counter / indoor dining area & terrace	✓
Ubon	Modern Thai Cuisine	À la carte	Dinner 7.00pm-11.00 p.m.	Waterfall area	Al fresco dining at waterfall garden	✓
Sandal	Grilled fish & mezze	À la carte	Dinner 7.00 p.m.-11.00 p.m.	In Palm Beach Club	Outdoor dining at seaside	✓
Grill Do Brasil	The Rodizio style Brazilian Churrascaria	À la carte	Dinner 7.00 p.m.-11.00 p.m.	Next to Event Area	Outdoor dining area	✓
Alia Beach Club	Fusion Mediterranean Cuisine	À la carte	Dinner 7.00 p.m.-11.00 p.m.	Beach	Outdoor dining at seaside	Extra Charge (Menu Prices)
Sevk-Et Steakhouse	Premium & dry aged hand cuts	À la carte	Dinner 7.00 p.m.-11.00 p.m.	Clubhouse Building 1 st floor	Indoor dining area	Extra Charge (Menu Prices)

*Reservation is required. Dress code is smart casual. No age restrictions. All À la carte restaurants are extra charge for meetings and football groups. Restaurant and bar operating hours or days may change due to adverse weather conditions, technical reasons and guest requests.



The Seahorse Seafood Bar & Grill



Köz Ocakbaşı



Ubon Thai Cuisine



CASUAL DINING

Venue	Concept	Menu	Operation Hours	Location	Service Area & Details	Inclusive
Shamrock	Selection of international cuisine	À la carte	Late & Night Dining 10.00 p.m. - 7.00 a.m.	Main building lobby floor	Indoor dining area & outdoor terrace	✓
Gusto	Selection of international cuisine	À la carte	Lunch 1.00 p.m. - 7.00 p.m.	Next to activity pool	Outdoor dining area	✓
Clubhouse	Breakfast, selection of world cuisine	À la carte	Breakfast 08.00 a.m. - 11.00 a.m. Lunch 12.00 p.m. - 5.00 p.m.	National & Carya Golf Club	Indoor dining area & outdoor terrace	Extra Charge (Menu Prices)
Palm Beach Club	Selection of international, Turkish and Mediterranean cuisine	À la carte	Lunch 12.00 p.m. - 6.00 p.m.	Beach	Outdoor dining at seaside	✓
Aqua Eleven	Enjoy lunch on sunbed quick service & take away popular fast food options ice cream, soft drinks & beer	Board menu	Lunch 12.00 p.m. - 4.00 p.m.	Aqua park	Outdoor dining area	✓
Alia Beach Club	Selection of international Cuisine.	À la carte	Breakfast 09.00 a.m. - 11.30 a.m. Lunch 12.00 p.m. - 5.00 p.m.	Beach	Outdoor dining at seaside	Extra Charge (Menu Prices)
Nazar Bakery	Selection of bakery and Turkish Desserts, breakfast options, tea, coffee and soft drinks	Pastry display case	All Day 9.00 a.m. - 11.00 p.m.	Main building ground floor (-1)	Indoor dining area & outdoor terrace	✓
Macaroon Patisserie	Selection of French Macarons, international desserts and handmade Callebaut chocolates and Mövenpick ice cream	Pastry display case	All Day 10.00 a.m.-10.00 p.m.	Main building ground floor (-1)	Indoor dining area & outdoor terrace	✓
In Room Dining Service	Breakfast, all day dining, desserts, children's menu	À la carte	24 Hours	Phone: 888	In room dining	Extra Charge (Menu Prices)

Restaurant and bar operating hours or days may change due to adverse weather conditions, technical reasons and guest requests.



Nazar Bakery



Palm Beach Snack



Macaroon Patisserie



BARS & LOUNGES

For you to share special moments with your favourite people or to unwind alone with a cold drink on a hot day, we offer a wide selection of bars in various locations.

- 15 different types of bars
- Fully stocked in-room bar & variety of snacks
- Welcoming with Henkell Rosé® sparkling wine
- Drink service to tables and sunbeds
- Popular beverage brands
- Premium quality spirits & cordials
- Premium quality house wines
- Guinness® Draught Beer at Irish Bar
- Heartbrand* Algida ice cream in all outdoor bars (Magnum, Cornetto, Nogger, Twister flavours and more)
- 100% freshly squeezed orange juice and selection of fresh juices in all bars
- Regnum Signature roasted 100% Arabica Coffee Beans
- Exotic and premium loose-leaf teas from around the world
- Selection of Red Bull® energy drinks
- Coca Cola® Company products and Lipton Ice Teas
- San Pellegrino® mineral water & Erikli Water®

*Wall's in UK / Inmarko in Russia / Langnese in Germany



Score Sports Bar



The Shamrock Irish Bar



Sevk-Et Steakhouse Bar

REGNUM CARYA

Venue	Concept	Menu	Operation Hours	Location	Service Area & Details	Inclusive
One Bar	Lobby Bar & Lounge	Full Bar	24 hours	Main building ground floor (-1)	Indoor lounge, outdoor heated terrace & bar counter	✓
Score Bar	Sports Bar	Full Bar	1.00 p.m.-12.00 midnight	Main building ground floor (-1)	Indoor lounge, outdoor heated terrace & bar counter	✓
Green Bar	Sunken Pool Bar & Lounge	Full Bar	4.00 p.m. - 12.00 midnight	Main building ground floor terrace (-1)	Sunken lounge & bar in pool	✓
Leaf Bar	Bar & Lounge	Full Bar	8.00 a.m. - 12.00 midnight	Main building lobby floor	Indoor lounge, outdoor terrace & bar counter	✓
The Shamrock Bar	Irish Bar	Full Bar with Draught Guinness Beer & Dining	4.00 p.m. - 12.00 Midnight	Main building lobby floor	Indoor lounge, outdoor terrace & bar counter	✓
Zing Bar	Juice & Smoothie Bar	Juices & Smoothies, Detox water, Teas & Coffees, Soft drinks	9.00 a.m. - 8.00 p.m.	Main building in spa center	Indoor lounge & bar counter	✓
Blue Bar	Pool Bar	Full Bar	9.00 a.m. - 7.00 p.m.	Main pool	Sunbeds, seating area & bar counter	✓
Gusto Bar	Pool Bar	Full Bar & Dining	9.00 a.m. - 7.00 p.m.	Next to activity pool	Sunbeds & seating area	✓
Clubhouse Bar	Bar & Lounge	Full Bar & Dining	8.00 a.m. - 8.00 p.m.	National & Carya Golf Club	Indoor dining area & outdoor terrace	Extra Charge (Menu Prices)
Aqua Eleven Bar	Pool Bar	Soft drinks, Teas & Coffees, Wine & Beer, Outdoor Dining	9.00 a.m. - 6.00 p.m.	Aquapark	Sunbeds & seating area	✓
Adult Pool Bar	Swim-up Bar & Lounge	Full Bar	9.00 a.m. - 7.00 p.m.	Beach side	Sunbeds, lounge & bar counter	✓
Harbour Bar	Pier Bar	Full Bar	9.00 a.m. - 7.00 p.m.	Beach	Sunbeds, lounge & bar counter	✓
Palm Beach Club	Beach Bar	Full Bar & Dining	9.00 am - 3.00 a.m.	Beach	Sunbeds, lounge & bar counter	✓
Alia Beach Club	Beach Bar	Full Bar & Dining	9.00 am - 11.00 p.m.	Beach	Sunbeds, lounge & bar counter	Extra Charge (Menu Prices)
Sevk-Et Steakhouse Bar	Lounge	Full Bar & Dining	7.00 p.m. - 11.00 p.m.	Clubhouse building 1st floor	Indoor lounge, outdoor terrace & bar counter	Extra Charge (Menu Prices)

Restaurant and bar operating hours or days may change due to adverse weather conditions, technical reasons and guest requests.



Green Bar



Zing Vitamin Bar



One Lobby Bar



HIGHLIGHTS OF LUXURY ALL INCLUSIVE BAR MENU

- 18 / 12 yrs Chivas Regal whisky
- Single Barrel Jack Daniels whiskey
- Jameson Black Barrel whiskey
- Glenmorangie single Malt whisky
- Double Black Johnnie Walker whisky
- Grey Goose vodka
- Belvedere vodka
- Beluga vodka
- Hendricks gin
- Don Julio tequila
- Bacardi rum
- Havana rum
- Aperol apéritif
- Campari bitter
- Martini vermouths
- Jägermeister liqueur
- Baileys, Drambuie, Amaretto Liqueurs
- Rémy Martin cognac vsop
- Martell cognac vsop
- Hennessy cognac vs
- Âlâ Rakı, Beylerbeyi Göbek rakı
- Guinness Draught at Irish Bar
- Corona beer
- Heineken beer
- Budweiser beer
- Handcrafted & international cocktails and more...

FULLY STOCKED IN ROOM BAR

- Nespresso coffee & tea set-up
- Carlsberg 330ml x 2
- White wine 187,5ml x 1
- Red wine 187,5ml x 1
- Uludağ mineral water 250ml x 2
- Coke 330ml x 2
- Coke sugar free 330ml x 2
- Fanta 330ml x 1
- Sprite 330ml x 1
- Red Bull® 250ml x 2
- Lipton ice tea 330ml x 2
- Cappy juice 330ml x 2
- Erikli water 330ml x 4 glass bottled
- Erikli water 330ml x 2
- Erikli water 1L x 5
- Milk 200ml x 1
- Nesquik®* milk 200ml x 1
- Gold roasted peanuts
- 7 Days croissant x 2
- Milka Bonibon chocolate candies
- Chocolate bar
- Olips mint rolls
- Haribo Goldbears
- Rufles crisps
- Doritos crisps
- Wafer
- Pizza crackers
- Light Cracker

Minibar-restocked daily between 9:00 a.m. and 5:00 pm.

Due to the pandemic or customs regulations, there may be delays in the supply of domestic and imported products during certain periods. Service of imported products is subject to the supply of the official distributor.



Blue Bar

* for 7-12 years old junior guests



Palm Beach Club



Adult Pool Bar



ENTERTAINMENT & RECREATION & LEISURE

Guests at Regnum Carya can participate in a wide range of leisurely and recreational activities by day and enjoy the numerous lively events organized by night.

Entertainment Venues

Exclusive stage shows and performances @ event area
Live music @ Green Pool stage
Opera recitals @ Green Pool stage
Themed night club parties
Themed Adult Pool parties
Sunset Happy Hour @ Pier
DJ performance @ Night Club

Spa & Wellness Center

Turkish Hammam, Sauna, jacuzzi, Body & Facial Treatment*, Beauty Center*
Fitness Center, work out group lessons, and private lessons*

Kids & Teens Club

Outdoor, indoor play grounds, activity rooms and cinema

Aquaworld

Wave pool, kids pool, baby pool, Crazy River, twisting body slide, speed slide, tube slide



Themed Night Parties

The Land of Legends Theme Park

Unlimited entrance and free shuttle

Pools

Water gym, aqua cycling, FloatFit, swimming lessons*

Beach

Beach volley, football, beach gym, darts, pier activities

Beach Gym area

Yoga, Fly Yoga, Pilates, Zumba, stretching, wooden gym equipment

Water Sports*

Jet car, jet ski, Flyboard, parasailing, Seabob, waterski, windsurfing, catamaran tour, Mable, Great Storm, Bandwagon, licensed catamaran & windsurf lessons

Waterfall Area

Relaxing waterfall sounds for reading or sleeping



The Land of Legends Water Park

Golf*

Private golf lessons, day & night golf

Hiking

Located around the Carya Golf Course (5 km)

Tennis

4 red clay tennis courts, 2 tennis hard court, tennis racket and balls. Private tennis lessons*, court lighting*

Basketball

1 outdoor basketball court

Outdoor Activities

Archery, Kangoo Jumps, table tennis

Fun Center*

Bowling, billiards, board games, arcade games, electronic games & PlayStation®

Local Attractions*

Please contact hotel concierge desk



Bicycle Rental*

Outdoor evening stage shows and parties run between May 1 and October 31. The days or hours of the entertainment program may change due to adverse weather conditions, technical reasons and guest requests.

*Extra charges apply

SUMMER 2023

Life. Well lived.



KIDS & TEENS ACTIVITIES

Chuckles Kids Club offers fun-filled activities for children aged 4-12 while Teen Club is a dedicated space for teens aged 13-17. Children under age 4 can join the fun with a parent or nanny.

Activities for age groups

- Baby : 0-3* years old
- Mini : 4-7 years old
- Junior : 8-12 years old
- Teen : 13-17 years old

Kids Club operation hours

- 9:00 a.m.-12:00 midnight

Kids Club features & activities

- Perfect location between aquapark and wave & activity pools
- 4000 sq m two-storey kids club building with shaded terrace
- Kids reception & registration desk
- Original Lego playroom walls
- Game room (Playstation®, Xbox®, VR games)
- Cinema room
- Sleeping room
- Indoor soft playground room
- Kids art studio

- Changing table, diaper, mat, rash cream and wipes
- Kids buffet restaurant for lunch, afternoon tea and dinner
- Fully equipped baby food prep corner
- HIPP baby food and healthy milk options at the buffet
- Eibe playground on the terrace
- Yoga & meditation sessions
- Daily tournaments, musical games
- Kids cooking workshop
- Concept parties
- Kids musical and theatre shows at the Regnum Amphitheatre
- Resort tour by mini train
- Mini disco

Outdoor facilities

- Shaded baby pool with family gazebos
- Kids & baby aquapark
- Kids pools with kids sunbeds

- Eibe outdoor kids adventure & activity park
- 800-seat kids amphitheatre

Teens Club operation hours

- 11.00 a.m.-12.00 midnight

Teens Club activities

- Located on the 1st floor of the Kids Club building
- Game room
- DJ set-up & DJ workshop
- Alcohol free bar & cocktail workshop
- Pinball & table tennis
- Board & card games
- Billiard & tabletop football
- Stern pinball & darts
- Outdoor sports & activities
- Concept parties
- Outdoor terrace with sofa set

*Children under 4 can participate in the activities with a parent or caregiver.



Kids Adventure Park



Teens Club



Outdoor Terrace Playground



SPA & WELLNESS

A spa centre which thinks different and makes you feel different.

Open daily 9.00 a.m. - 8.00 p.m.

Features

- The 5,000 sq m Greendoor Spa is located on the lobby floor
- All products used at our facility are organic certified, strictly against animal testing, respectful of nature and packaged in recycled materials
- All natural products are certified by the Organic Trade Association
- All massage oils, shampoo and shower gel are ETKO Organic certified
- The all aromatic products used in our sauna and steam bath are certified organic
- Some cosmetic products are ECOCERT and BIO certified
- Pool hygiene maintained with chemical free ECA (Electro Chemical Activation) system
- Air sterilization and surface disinfection using ecological biocidal disinfectant

Facilities

- Spa Reception & information desk
- Fitness center
- Turkish hammams
- Changing rooms with lockers
- Heated indoor chlorine-free pool
- Lift for disabled pool access
- Hydrotherapy massage beds in pool
- In-ground jacuzzi (chlorine-free)
- Indoor kids pool (chlorine-free)
- Bathrobe warmer at entrance of the indoor pool
- Heated outdoor chlorine-free pool
- Sauna, steam room and ice fountain
- Zing Bar & lounge in separate area

Extra Charge Facilities & Services

- 1 King spa suite with jacuzzi
- 3 Couple's rooms with sauna
- 2 Couple's rooms
- 1 Thai room,
- 1 Ayurveda room
- 11 Standard rooms
- 3 facial care rooms
- 3 body care rooms
- 5 Bali houses with private sauna, jacuzzi, shower and relaxing terrace
- Turkish bath treatments
- Treatment and aromatherapy massage
- Spa boutique products
- Beauty center

GreenCell Beauty Centre

- Located on the first floor
- Facials, body, hair care treatments with INDIBA
- Facial and body treatments
- HydraFacial ve Cryotherapy
- Weshape™



Relaxing Area



Indoor Pool



Bali House



BEEHIVE FITNESS CLUB

The Beehive Fitness Club located on the lobby floor of the main building is equipped with the Technogym brand advanced technology fitness equipment.

Open daily 08:00 - 20:00

Cardio

- 1 Technogym SkillMill
- 1 Technogym SkillRun
- 2 SkillRow
- 1 Climb
- 1 Vario
- 5 Treadmills
- 2 Ellipticals
- 1 Recumbent Exercise Bike

Weights

Pure Strength Series:

- 1 chest press
- 1 incline chest press
- 1 wide chest press
- 1 low row
- 1 row
- 1 pulldown
- 1 hip thrust
- 1 rear kick
- 1 linear leg press
- 1 hack squat
- 1 pure strength half rack

Selection 900 Series:

- 1 chest press
- 1 pectoral (fly)

- 1 vertical traction (lat pull-down)
- 1 reverse fly
- 1 upper back
- 1 shoulder press
- 1 abductor
- 1 adductor
- 1 leg extension
- 1 seated leg curl
- 1 leg press
- 1 rotary torso
- 1 total abdominal
- 1 kneeling easy dips chin-up
- 1 multipower
- 1 bench press
- 1 decline bench press
- 2 Scott benches
- 2 sets of 2kg -22kg dumbbells
- 1 set of 24kg -42kg dumbbells
- 1 set of 10 kg-45 kg pre- loaded bar
- 1 cable station

Functional Training Area

- Horizontal bar and trx area
- Plyoboxes
- Kettlebells (4kg-24kg)
- Medicine balls (4kg-10kg)

- Bands (various resistance)
- Balance pads
- Balance boards
- 2 Bossu balls
- Ghd bench ,
- Adjustable decline bench
- Lower back bench
- 2 Technogym benches
- Jump rope
- Foam roller
- Speed ladder

Group Fitness Studios (2 studios)

- LesMills Group Fitness Studio
- SkillBike Indoor Cycling Studio

Extra Charge Services

- Body Fat Measurement/Analysis
- Kinesis Workouts

Personal Training*

Yoga, Pilates, Boxing, Kickboxing, Weight Training, Functional Training, HIIT, LIIT, Cardio Training, Sport Specific Training (golf, tennis, football), Stretching



*Extra charges apply





POOLS

Regnum Carya features several pools, including the main heated outdoor pool and the spa center's indoor pool. The resort's selection of pools also include a large wave pool, adult pool (+16), activity pool and shaded kids pool.

	Locations	Heating system*	Fresh Water	Tanning lounge ledge	Wood Deck	Jacuzzi	Pool lift chair	Pool Steps	Pool Finish	Depth (cm)	Length (m)	Size (m ²)	Capacity (m ³)
Outdoor	Main Pool*	✓	✓	✓	✓			✓	Pebble	140	90	1890	1909
	Activity Pool**	✓	✓	✓	✓			✓	Pebble	140	77	1540	1672
	Wave Pool		✓						Pebble	140	50	1555	1210
	Adult Pool (+16)**	✓	✓	✓	✓	✓		✓	Pebble	140	50	945	1433
	Shaded Kids Pool		✓						Pebble	40	21	294	117
	Aquapark Kids Pool**	✓	✓						Pebble	40	32	485	196
	Spa Outdoor pool**	✓	✓					✓	Pebble	140	12	130	200
Indoor	Spa Indoor Pool*	✓	✓			✓	✓	✓	Pebble	140	18	305	428
	Spa Indoor Kids*	✓	✓						Pebble	40	2	10	4

Pool facilities are officially open between April 1 to October 31.

* The main pool heating system is closed between May 1 and October 1

** Regnum Carya may turn off some of the pool heating systems on certain days due to number of guests, weather conditions and other operational reasons. Pools may be temporarily closed due to adverse weather conditions, safety and pool hygiene.



Aquapark Kids Pool



Wave Pool



Adult Pool



BEACH LIFE

We've created a beautiful private white sand beach along the sparkling cool waters of the Mediterranean for you.

Features

- Blue flag awarded
- 250 m white sandy beach
- Cozy sunbeds & kids sunbeds
- Tanning beds in wooden boats
- Adult Beach section +16
- Disabled sunbed area
- Wheelchair sea access ramp
- Charging station

Facilities

- Beach facilities are officially open from May 1 through October 31
- All day dining restaurant
- Beach Bar
- Harbour Pier Bar
- Pier pavilions & Bar
- Beach pavilions
- Jungle Gym with wooden equipment
- Private Alia Beach Club and restaurant
- Night club

Beach Activities

- Beach volley
- Yoga, Pilates,
- Zumba, stretching
- Beach gym,
- Concept parties

Beach Services

- Dining services
- Ice cream & fruit corner
- Drink service to sunbeds
- Beach towel service
- Cold towel service
- Sunglasses cleaning services
- Resort shuttle
- Security

Extra Charge Services

- Water sports activities
- Daily beach & pier pavilions rental
- Spa treatments area on pier
- Shisha service
- Bottle champagnes & spirits
- Exclusive shellfish & seafood
- Private Alia Beach Club and restaurant

Pavilion (Cabana) Details:

- Operating hours 9:00 a.m. - 7:00 p.m.
- Butler service to all pavilion guests
- Dining menu available to order from 12:00 noon - 6:00 p.m.
- Beverage menu with hotel concept
- Mini bar, safe box, shower
- Bathrobes and towel
- Butler call button
- Over-the-water dock hammock on pier

Please note that beach facilities are officially open between May 1 through October 31



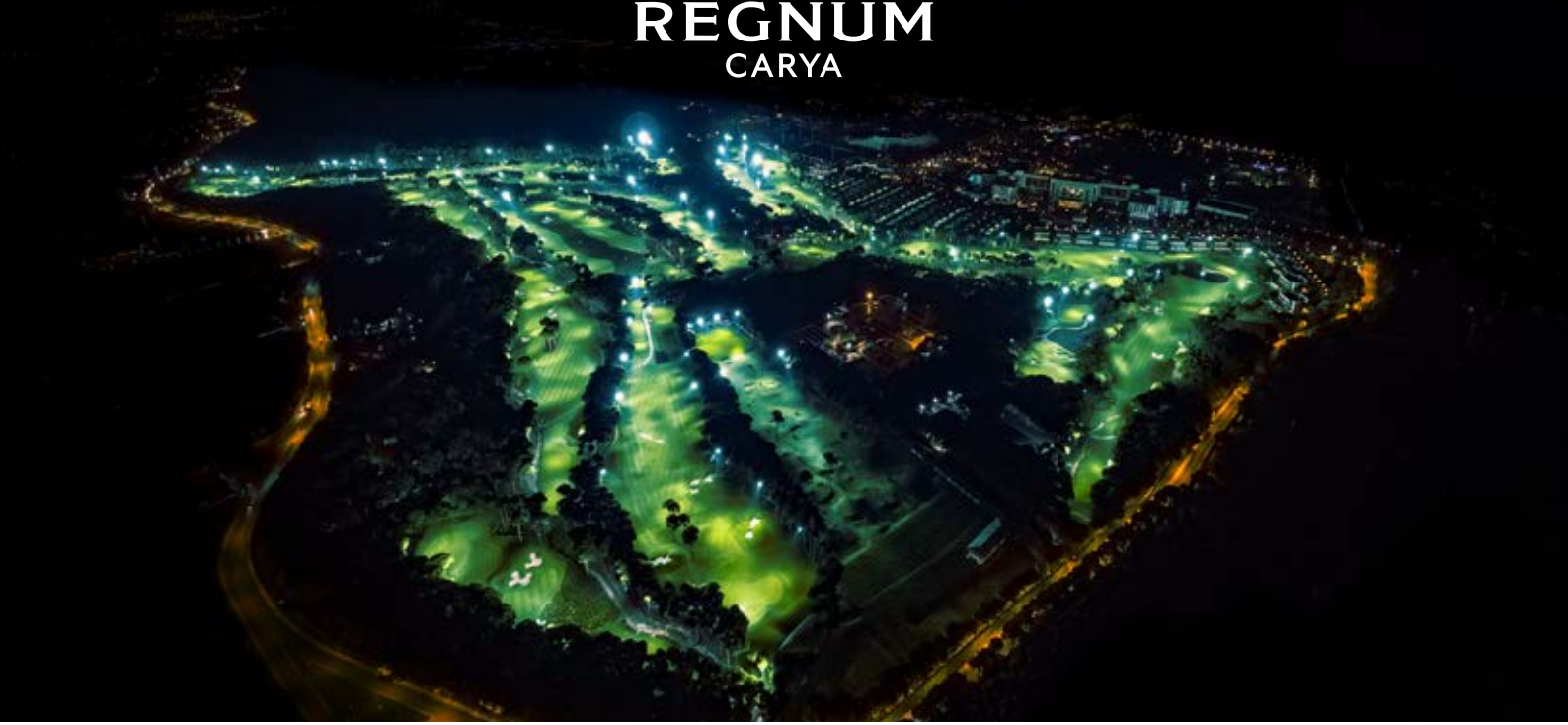
Alia Beach Club



Beach Pavillon



Pavilion Pier



CARYA GOLF CLUB

The first and only fully lighted golf course in Europe

Designer: Peter Thomson / TPL

Course opening date: 10.11.2008

Course: The first fully lighted golf course of Europe and the one and only heathland style golf course built in Turkey's Mediterranean coast.

Location: Belek - Antalya

Area: 760.000 m²

Grass: 420.000 m²

Club rules: Soft spikes only

Handicap (Men): 36

Handicap (Women): 36

Pro Shop: Bogner, Galvin Green, RLX, Under Armour, Ruck Maul, Honma, Taylor Made, Ecco, Porsche Design brands 350 m² proshop

Golf Lessons: Available in Turkish, English, Russian and German languages by P.G.A Qualified Professionals with TPI certificated and Trackman facilities

Greens: Tiff Eagle, Average per green approx.600 sq m

Tees: 4 Tees per Hole

Fairways: Bermuda 419, Challenging and undulating terrain with plenty of strategic options

Bunkers: 84 Bunker with white quartz sand

Lakes: 4 lakes in 18 holes courses

Driving Range: Double ended with a unique state of the art academy building with and 52 bays. With Taylor Made Performance Lab.

Putting Green: 4 putting greens, one of them the largest green in the world
A) 4100 m² – 165 meters long
B) 950 m²
C) 710 m²
D) 250 m²

Chipping & Pitching Green: 4 Chipping greens with 50 people capacity, 4 pitching greens, 7 target practice greens, 4 training bunkers, 1 fairway practice bunker

Golf cars: 70 golf cars

Rental Clubs: 120 TaylorMade Sim Max & Stealth, M6



TURKISH AIRLINES OPEN





NATIONAL GOLF CLUB ANTALYA

The first and still the best...

Designer: David Feherty / David Jones

Course opening date: 18.11.1994

Course: 18-hole heathland course set in a pine forest

(IRMAK AND TUNA COURSES)

Location: Belek - Antalya

Area: 1.000.000 m²

Grass: Bermuda 419, Lolium Perenne, Tifdwarf Bermuda and Poa Trivialis.

Club rules: Soft Spikes. National Golf Club is a non – metal spike facility.

Handicap (Men): 36

Handicap (Women): 36

Pro Shop: Bogner, Galvin Green, RLX, Under Armour, Ruck Maul, Honma, TaylorMade, Ecco, Porsche Design Brands 110 m² Proshop

Golf Lessons: Available in Turkish, English, Russian and German languages by P.G.A Qualified Professionals.

Greens: Tifdwarf Bermuda. Approximately 500 square metres per green

Tees: 4 Tees per Hole

Fairways: Bermuda 419, challenging and undulating terrain with plenty of strategic options.

Bunkers: 40 white quartz sand bunkers

Lakes: 7 Lakes

Driving Range: One side 260m x 110m, max. 80 pax

Putting Green: 800 m². –2 putting greens 40 metres long

Chipping & Pitching Green: 1 Chipping green & 1 pitching green

Golf Cars: 60 golf cars

Rental Clubs: 20 Taylor Made M2 -





M.I.C.E. & WEDDINGS

Rooms covering an area of 7500 m² with high ceilings and receiving natural light, equipped with advanced visual, audio and light systems technologies. Accommodating private meetings for different sizes of groups in this special area that can be divided into different sections.

Meetings & Conventions

- 7500 m² and two-storey convention center
- Enclosed guest drop-off area
- Exclusive reception within the convention center
- Valet service & bellboy service
- Welcome drink service
- Indoor access to hotel lobby & rooms
- 2100 m² column-free Carya Grand Ballroom
- 750 m² foyer on the ground floor
- 1000 m² column-free Pinus Ballroom
- 7 Breakout rooms
- 1200 m² foyer on the first floor
- Expandable doors suitable for all types of new vehicle launches
- Loading areas providing direct access to the ballrooms
- Accessibility for disabled guests
- Backstage dressing rooms
- Direct access from car park
- Cloakroom service
- Storage rooms
- Security service

Catering Services

We offer you our full-range of indoor and outdoor catering services that includes complete food preparation and presentation for special events, weddings, festivals and galas plus all setup, clean-up, tear-down and requested amenities.

Transportation Services

- Hotel VIP & shuttle vehicles
- Avis rental cars, taxi
- Helicopter transfer

Business Center Services

- Computer, photocopying
- Phone, printing, scanning,
- Paper shredding, lamination
- Wireless internet access
- Safe deposit box

Small Social Groups

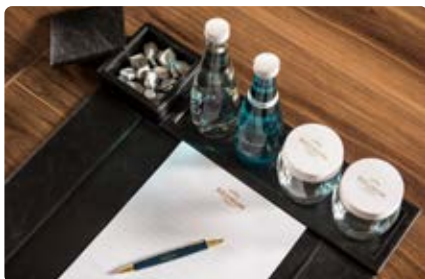
- We will be happy to decorate a separate area in the hotel where you can celebrate your special occasion with friends and family

Weddings at Regnum Carya

- Coordinating and planning
- Wedding butler service
- Ceremony
- Photography and memories
- Wedding florist service
- Make up and hair services
- Wedding gala dinner
- After party
- Honeymoon concept

Premium Spaces & Venues

- White sand beach
- Seaside venues
- Waterfall area
- Wooded park area
- Private villa facilities
- Fine dining restaurants
- Ballrooms





CONVENTION CENTER

We are very proud to have been chosen as the central hotel for the G-20 SUMMIT 2015 in ANTALYA and to have hosted world leaders while duly representing our country.

	Function Rooms	Dimensions				Capacities					Daylight
		Area Sq m	Length	Width	Height	Theatre	Classroom	Boardroom	Cocktail	Banquet	
Ground Floor	Venue										
	Carya Grand Ballroom	2100	35	60	7,20	2000	1200		1900	1600	✓
	Carya I	700	35	20	7,20	600	375		600	470	✓
	Carya II	700	35	20	7,20	700	410		650	500	✓
	Carya III	700	35	20	7,20	600	375		600	470	✓
	Carya Pre-Function Area	750			4						
	Pinus Ballroom	1020	32	32	5,20	900	550	100	900	560	✓
	Pinus I	450	32	15	5,20	400	180	70	400	240	✓
	Pinus II	550	32	17	5,20	450	320	70	500	320	✓
	Pinus Pre-Function Area	460			5,20						
First Floor	Citrus Room	40	8	5	5,20	30	20	13			✓
	Laurus Room	110	15	7	4	100	60	33			
	Laurus I	55	8	7	4	50	30	17			
	Laurus II	55	8	7	4	50	30	17			
	Ficus Room	110	15	7	4	100	60	33			
	Ficus I	55	8	7	4	50	30	17			
	Ficus II	55	8	7	4	50	30	17			
	Cornus Room	90	10	9	4	90	54	24			✓
	Tilla Room	105	11	9	4	90	54	24			✓
	Punica Room	72	9	8	4	60	36	15			✓
Salix Room	64	13	5	4	50	30	17			✓	

Please note that all function room dimensions and capacities are approximate.



REGNUM FOOTBALL CENTER

With three football fields designed to meet FIFA's official standards, Regnum Carya offers a top-class training facility for sports lovers seeking to become the football stars of tomorrow.

- 3 Football fields* with floodlit system
- All fields meet FIFA standards (68x105m)
- 2 separate dressing rooms, 1 storage room, 1 referee room
- Grandstand for 475 persons
- VIP lounge for 25 persons
- Rinowo Tifway & British perennial ryegrass
- High absorption surface against rainy weather (fish bone drainage system)

- Rainbird Smart Irrigation Systems
- Four different size goals for each field
- Football filming towers
- 3 Circuit and goalkeeper fields (40x25m)
- Branding boards around pitches for privacy of clubs
- Private line drawing service for teams (upon request)
- Separate entrance and bus parking area
- Loading areas providing direct access to

- the facilities
- Private direct access to the football fields from the dressing room
- 7/24 staff & greenkeeper assistance in football centre
- Complimentary shuttle services
- Training materials (dummy, ground marker etc.)





*The football fields are planned to be moved to a different location in March 2023.



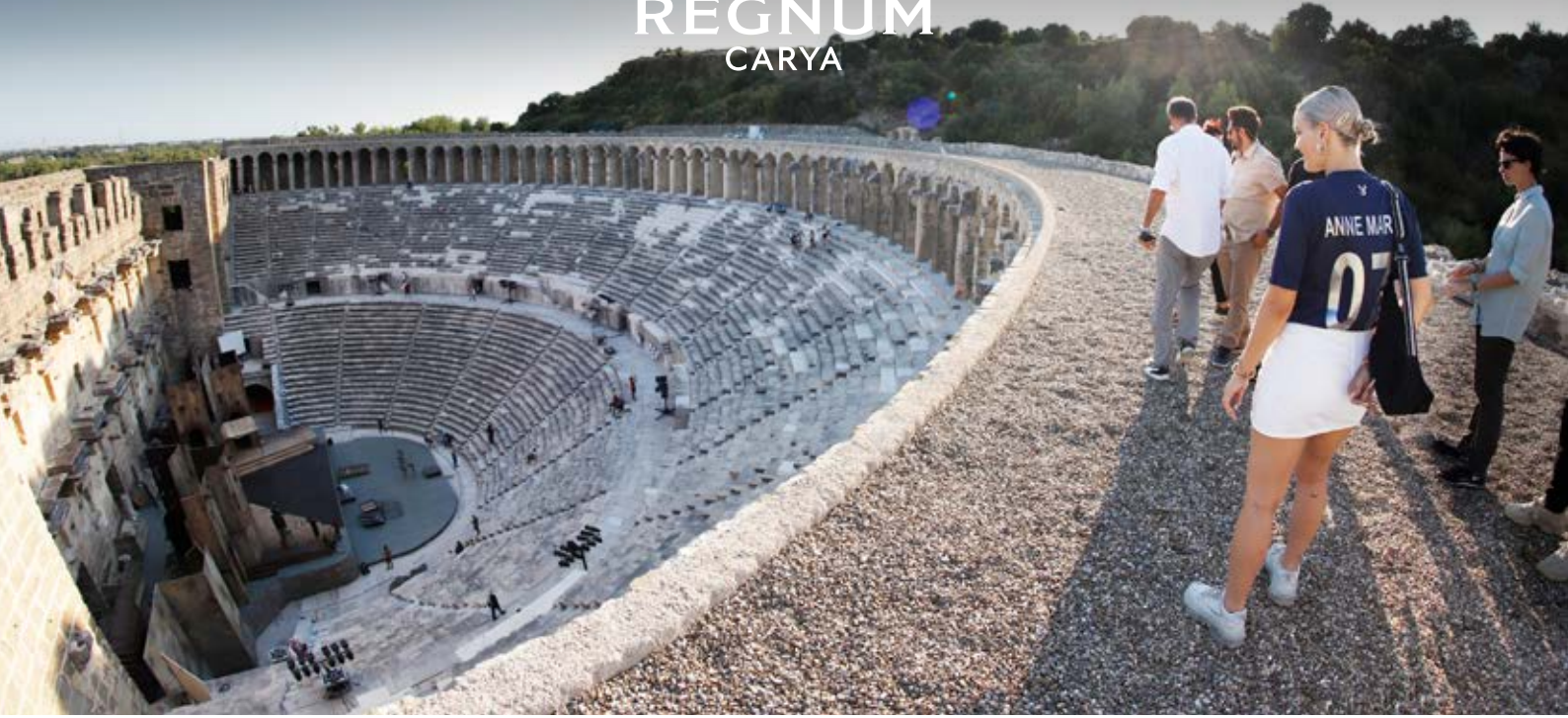


LEAF LOYALTY CLUB

You can benefit from many exclusive services and discounts with the Leaf Loyalty Club, the loyalty program that only the most distinguished guests of Regnum Carya are members of. The Leaf Loyalty Club program offers special discounts for many services including helicopter rental, hotel transfer services, reservations, A la Carte restaurants, and private sports lessons.

PRIVILEGE HIGHLIGHTS				
	Green Card 0 - 29 Points	Silver Card 30 - 150 Points	Gold Card 151 - 300 Points	Ruby Card 301 Points And Over
SPA treatments	-	-	10%	15%
Pavilions (cabana) rental	-	5%	10%	15%
Buggy rental	-	5%	10%	15%
Food & Beverage extras	-	5%	10%	15%
Laundry service	-	5%	10%	15%
Tennis lessons	-	5%	10%	15%
Babysitter	-	5%	10%	15%
Helicopter rental	-	5%	10%	15%
Transfer service	5%	5%	10%	15%
Fitness lessons	-	5%	10%	15%
Proshop	5%	5%	10%	15%
Golf Academy	-	-	-	Complimentary
Late check-out (upon availability)	-	-	Complimentary	Complimentary
Alia Beach (The premium products specified in the menus are extra charged)	-	-	-	Complimentary
Sevk-Et Steakhouse (The premium products specified in the menus are extra charged)	-	-	-	Complimentary

Please visit our website for more details and all privileges
Regnum Carya reserves the right to change or revoke the discounts and privileges offered by the loyalty system at any time without prior notification.



LOCAL ATTRACTIONS

goturkeytourism.com

Aspendos Ancient City - 22 km

Situated in the town of Serik in Antalya province, Aspendos impresses visitors with its elegant amphitheatre and other ancient remains. The theatre of Aspendos is one of the most magnificent and well-preserved buildings in the world built by the Romans.

Perge Ancient City - 24 km

The magnificent ancient city of Perge is set amidst the beauty of Antalya. It is located 2 km away from the main road of Antalya - Alanya and 15 km from Antalya city centre. Visitors can see some of the excavations continuing on the site.

Kursunlu Waterfall - 30 km

Kursunlu Waterfall is a unique place where a cascade connecting seven ponds falls from 18 m in height against a backdrop of green nature. It is one of the most attractive landscapes in terms of lush plants and picnic areas in Antalya.

Hadrian's Gate of Antalya - 39 km

Hadrian's Gate (Three Gates) was built as the main gate of Antalya during the reign of the Roman Emperor Hadrian (117-138 BC). The gate today stands in its old glory and is one of the best-preserved historic structures in Antalya.

Old Town (Kaleiçi) - 42 km

Kaleiçi, the old city centre of Antalya, combines the aesthetics of old and new. In the heart of Antalya, Kaleiçi is one of the most frequently visited areas of the city with its historic buildings, entertainment facilities, hotels, restaurants and bars.

World's Biggest Tunnel Aquarium - 42 km

Antalya Aquarium, which is considered as the biggest tunnel aquarium in the world, is one of the most lively attraction centres in the city. An inspiring adventure, discover your imagination at the Antalya Aquarium.

Antalya Museum - 45 km

Located in Konyaaltı, the Antalya Museum or Antalya Archeological Museum is one of Turkey's largest museums. It includes 13 exhibition halls and an open-air gallery. It covers an area of 7,000 m² (75,000 sq ft) where 5,000 works of art are exhibited.

Side Ancient City - 48 km

Side is among the best known ancient cities in Turkey. Side was a port in ancient times and its name means pomegranate. The amphitheatre built on colonnaded arches is the biggest in the area. Among the ruins are the agora, a gymnasium, the Apollo Temple on the seaside, fountains and the necropolis.

Termessos National Park - 61 km

Gulluk Mountain (Termessos) National Park is one of the most spectacular areas in Turkey, situated at the foot of the Taurus Mountains to the north-west of Antalya. The national park is 34 km away from Antalya city centre.



Hadrian's Gate



Old Town (Kaleiçi)



Side Ancient City

PRIVILEGE SERVICES

TERMS & CONDITIONS

Complimentary privilege services are Regnum Carya's gifts to guests and not included in the "All Inclusive" accommodation. These services are non-transferable and cannot be exchanged for cash in part or full, and are valid during period of stay. For further information, please visit the official website.

Regnum CIP Lounge & Fast Track Service (12 months)

- Fast Track & Lounge service is valid for guests staying a minimum of 4 nights or more in all room types or villas
- Fast Track & CIP lounge service is for direct international flights departing from Antalya Airport International Terminals
- Check-out from the hotel must be the same date as the flight departure date
- All guests are required to make a reservation at the hotel concierge desk at least 24 hours prior to their flight departure time from Terminal 1 or 2

Service details;

- Greeting Regnum Carya passengers at the CIP meeting point in Terminal 1 or 2
- Entering the terminal through a private gate
- Completing all check-in and security formalities using Fast Track Lanes accompanied by CIP staff
- Waiting for the flight at Regnum CIP Lounge offering various refreshments, snacks and free Wi-Fi service

CIP / General Aviation Terminal Access (12 months)

- Excludes the private jet flights
- General Aviation Terminal CIP Access service is valid for guests staying a minimum of 7 nights or more in the villas: Jade Presidential Suite, Sapphire Villa, Emerald Villa, Tiara Villa and Crown Villa.
- General Aviation Terminal service is valid for direct flights arriving to / departing from Antalya Airport Domestic & International Terminals
- CIP Terminal service is valid for arrivals to / departures from Antalya Airport Domestic and International Terminals and may only be used once per stay.
- Flight arrival date / hotel check-in date and hotel check-out date / flight departure date must be on the same dates.

Service details:

- Greeting the Regnum Carya passengers at the General Aviation Terminal

- Luggage assistance by a porter
- Private passport control and customs control
- Hot / cold dishes, alcoholic / non-alcoholic beverage service in the Lounge
- VIP transfer to the jet

VIP Airport Transfer (12 months)

- Round trip (1 arrival & 1 departure) VIP transfer is valid for guests staying a minimum of 4 nights in the villas, Jade Presidential Suite and for direct bookings through the Regnum Hotel website
- Arriving passengers should e-mail their flight information (flight date, arrival time, flight number, confirmation number) to reservationbelek@regnumhotels.com and transfer@regnumhotels.com.
- Outgoing passengers should make a reservation through transfer services with their flight information (flight date, departure time, flight number, confirmation number).
- For international flights, the hotel-airport transfer time is 3 hours prior to the time of departure.
- For domestic flights, the hotel-airport transfer time is 2 hours prior to the time of departure.
- The hotel-airport transfer service will wait a maximum of 15 minutes after the scheduled hotel pick-up time.
- Regnum Carya shall not be held responsible for delayed flights and cancellations.
- Transfer reservations may be cancelled at least 24 hours in advance, cancellations cannot be made on the same day.
- Free VIP transfer service is only available from Antalya International Airport
- All VIP transfer vehicles are exclusive for our guests

Complimentary Helicopter Transfer (April 1- October 31)

- Round trip (1 arrival & 1 departure) helicopter transfer is valid for guests staying a minimum of 7 nights or more in the Crown Villa and Tiara Villa.
- Helicopter transfers are available

- between sunrise & sunset hours and all transfers beyond these hours will be carried out with our VIP vehicles by land.
- The hotel shall not be held responsible for helicopter transfers that cannot be carried out due to adverse weather conditions and technical breakdowns and/or during maintenance periods and therefore no compensation can be claimed against the hotel if this service cannot be provided due to such reasons.
- Helicopter passengers are limited to 4 persons. Luggage is not allowed on board. For airport transfers, luggage is carried by land free of charge.
- Night flight is not possible. Please note that the complimentary helicopter transfer service is offered only to Crown Villa and Tiara Villa guests and will be provided depending on the terms of the contract made with the sales department.

The Land of Legends Theme Park (depending on park operating days)

- Complimentary access and entrance to the Land of Legends (water & theme park)
- Unlimited free entrance and shuttle service to The Land of Legends Theme Park is valid for hotel guests staying a minimum of 3 nights or more in all room types or villas
- All food and beverage services are extra charge and room credit account is not valid
- Bringing any kind of outside food, alcoholic or nonalcoholic beverages into the park area is not allowed.
- The Land of Legends Theme Park is a third-party business partner
- This service is not available after room check out

Villa Lounge Working Hours

- Villa Lounge check-in/check-out operation hours are between
- 09.00 a.m. and 11.00 p.m. for Pearl Pool Suite or Pearl Pool Family room





HEALTH - SAFETY - ENVIRONMENT

Hotel Safety And Security

Regnum Carya is the first and only resort hotel in Turkey to have been awarded the Safehotels Executive Certificate, the highest degree of certification granted by Safehotels, a global hotel safety certification company that performs audits in 60 countries worldwide. Contents of Safehotels certification: Hotel Property and Guest Security / Process, Procedure, Training and Management / Security Equipment/ Fire Equipment / Fire Procedures and Training / Crisis Management

Guest Rooms

Regnum Carya is the first hotel in Turkey to implement The Hygienic Room Program by Diversey Consulting, one of the world's leading companies for hygiene solutions, as well as the first hotel awarded with certification. Regnum Carya is certified by the Potema bed cleaning system, the world's only registered bed cleaning service.

Food Safety

We apply the ISO 22000 Food Safety management system in our facility where every process from the acceptance of food to its presentation is continuously monitored by the Food and Environmental Engineers in our company. Regnum Carya is awarded with the White Flag Food Safety Certificate by the Governorship of Antalya Food Safety Committee and is certified by ISIS Turkey (International Safety Inspection System) for food safety. Contents of certification: Bars, kitchens, food production areas and food storage rooms, monthly checks and reports

Swimming Safety

Fully trained lifeguards are on duty at all

times during red & yellow flags at the pool and beach

Spa Center-Kids Club Hygiene

Regnum Carya is the first hotel in Turkey to implement and receive certification for Diversey Consulting's The Hygienic SPA & Gym Audit and The Safe & Hygienic Mini Club Audit programs. Regnum Carya is the only accommodation facility in the Mediterranean Region that still continues to implement these programs.

Hotel Hygiene

To remain compliant with WHO and CDC guidance, Diversey provides the necessary hygiene audits that maintain the highest levels of cleaning and disinfection for keeping employees and guests safe.

Laundry Hygiene

Professional laundry service is provided on site. All hotel textiles and laundry are washed by our expert team by taking cross contamination measures. Diversey Clax Personril, a chemo - thermal disinfection product recommended by international authorities for hygienic washing, is used for laundry and for cleaning room textiles

Electric, Fuel & Power

The hotel operates on 220-240 volts and 50 hertz. In the event of disruption to the electricity supply, the hotel's total 5750 KVA emergency generators will automatically operate, to ensure that all fire & life safety equipment will continue to operate. The fuel oil tank of the emergency generator can keep the generator running for 36 hours.

Water

The distributed water complies with the World Health Organization standards for water. The hotel has at anytime a 2 days storage supply of water. The hotel

has Water Safety certified by ISIS Turkey (International Safety Inspection System) Contents of certification: Pools, water storages, water system and Legionella monthly check and report

Emergency Care

Emergency ambulance service is available at Regnum Carya 24 hours a day, seven days a week

Environment

Regnum Carya is the first golf hotel awarded with the LEED Gold Certificate of Europe. LEED (Leadership in Energy and Environmental Design) is an internationally recognized green building certification system. Regnum Carya has received the International "Blue Flag 2020" beach award by the Turkish Foundation for Environmental Education (TURÇEV) and the Green Star award (Environmentally Friendly Establishment) by the Turkish Ministry of Tourism and Culture

"ReGreen" with the participation of volunteer staff, «Move-on Regnum / Take action for the future today!» has been involved in many environmental and social responsibility projects since 2018.

Quality Management System

Regnum Carya has been awarded the quality certification ISO 9001:2015 version

Safe Tourism – Covid 19

Regnum Carya has met the requirements for the "Assessment Criteria for COVID-19 and Hygiene Measures to be Implemented in the Hotels and their Food & Beverage Venues during the Pandemic" published within the framework of the "Safe Tourism Certification Program" and has been entitled to receive the "Safe Tourism Certificate"



ABOUT REGNUM CARYA

Regnum Carya, situated on a perfect and white sandy beach in the Mediterranean, is a unique and private heaven in Belek-Antalya, Turkey.

This luxurious, all-inclusive, family friendly and five-star resort, only 30 minute's drive from the International Airport in Antalya, provides an excellent accommodation opportunity. Furthermore, the resort always offers the highest level of comfort with accommodation ranging from 62 square meters large standard rooms to the Crown Villa with 3500 square meters.

Promising an experience on par with the best five-star resorts in Turkey, Regnum Carya provides its guests with the opportunity to swim outdoors during both summer and winter months, enjoy a holiday full of sports, relish the excellent scenery of the Mediterranean and old pine forests, and taste the most special delicacies of the world cuisine with ten different fine dining a la carte restaurants and a buffet restaurant.

In addition, golf enthusiasts are invited to play golf at two different courses. You should try Carya Golf Club, Turkey's first and only floodlit golf course with 18 holes which allows nighttime golf, and the National Golf Club with 27 holes. With three football grounds designed in accordance with the FIFA standards, Regnum Carya also provides various opportunities also for training camps for professional football teams.

At our luxury resort, where we hosted the G-20 World Summit in November 2015, there is a first-class 7500 square-meter convention centre with a private entrance, a 2100 square-meter column free ballroom and 13 meeting halls which receive natural light. Regnum Carya is the first golf hotel awarded with the LEED Gold Certificate of Europe.





Property
Regnum Carya

Category
5+ Golf & Spa Resort Hotel

Concept
Luxury all inclusive

Operation
12 months

Summer Season*
April 1 – October 31

Winter Season
November 1- March 31

Opening Date
April 1, 2014

Total Room
612

Total Area**
1.050.000 m²

Ownership
Carya Turizm Yatırımları A.Ş.

Investor
Fikret Öztürk

Chairman
Ali Şafak Öztürk

Architect
Mert Yanpal - Rasyonel Tasarım

Interior Designer
Murat Denizaltı - Arketipo Design

Landscape Designer
Gregg R. Sutton, PLA - EDSA

Hotel Manager
Tolga Yılmaz

Sales Director
Eser Demir

Marketing Director
Deniz Üstertuna

Address
Belek Turizm Merkezi
Kadriye Mahallesi, Üçkum Tepesi Mevki
07525 Serik-Antalya / Turkey

GPS Coordinates
36°51'19"N 31°00'30"E

Telephone
+90 242 710 34 34

Direct Sales:
+ 90 444 64 23

Website
regnumhotels.com

Email
sales@regnumhotels.com

Social Media
 / regnumcarya

Marketing Assets:
stock.regnumhotels.com/

Regnum Carya Hotel reserves the right to make changes, corrections, and/or improvements to the information, and/or to the products, programs, and/or services described in such information, at any time without prior notice.

* Beach facilities are officially open between May 1 through October 31
** Including 18 holes Carya Golf Club



regnumhotels.com